



Discovering and Using Data
NC OneMap



Geospatial Portal Demo

How to Search for Data

<http://data.nconemap.gov>

[Help](#) [About](#) [NC OneMap](#)

NC GeoSpatial Portal

OneMap

[HOME](#) [SEARCH](#) [BROWSE](#) [DOWNLOAD IMAGERY](#) [LAUNCH MAP VIEWER](#)

Home

2015 Imagery is Now Available Online for [Viewing](#) and [Download](#)

Find Resource...

Tutorial Videos

[HOME](#) [SEARCH](#) [BROWSE](#) [DOWNLOAD IMAGE](#)

Home

We've changed! The NC OneMap GeoSpatial Portal ever. Want to see the most recently added or updated imagery for multiple years? Check, check, and check [services page](#) to see a listing of map services we have available.

Find Resource...

Introduction to the GeoPortal

● ● ● ● ● ● ● ●

Most Recently Added/Updated Resources...

Expand results

-  [NC 1998 Color-Infrared Digital Orthophoto Quarter-Quadrangles \(DOQQ\)](#)
-  [NC 1993 Digital Orthophoto Quarter-Quadrangles \(DOQQ\)](#)
-  [2015 North Carolina Digital Orthoimagery Download](#)
-  [NC 2015 Orthoimagery Seamlines with Photo Exposure Dates](#)
-  [Natural Heritage Element Occurrences \(October 2015\)](#)

API: [GEORSS](#) [ATOM](#) [HTML](#) [FRAGMENT](#) [KML](#) [JSON](#) [CSV](#)

Search

Records shown from: NC OneMap GeoSpatial Portal

[Click here to select different site\(s\) or configure search.](#)

More Search Options

[Clear](#)

WHERE

Anywhere Intersecting Fully within



Results 1-10 of 160 record(s) [1](#) [2](#) [3](#) [4](#) [5](#) [>](#) [Last](#)

Expand results [Zoom To Results](#) [Zoom To Searched Area](#)

NC Parcel Boundaries and Standard Fields - ArcGIS Map Service

This digital geospatial dataset represents parcel boundaries with standard core attributes for a collection of parcel data from North Carolina county data producers and the Eastern Band of Cherokee Indians. The Integrated Cadastral Data Exchange project ...

[Download/Open](#) [Preview](#) [Globe \(.kml\)](#)
[ArcGIS Explorer \(.nmf\)](#) [ArcGIS \(.lyr\)](#) [Add To Map](#) [Details](#)
[Metadata XML](#) [Zoom To](#)

NC Parcel Boundaries and Standard Fields - ArcGIS Feature Service

NC Parcel Boundaries and Standard Fields - Download

Browse

Use this page to browse resources in the geoportal.

[-] Browse Resources

Select one of the items in the tree to view a specific list of resources.

- [-] Alphabetical
 - 0-9
 - A-C
 - D-F
 - G-I
 - J-L
 - M-O
 - P-R
 - S-U
 - V-Z
- [-] Content Type
 - Applications
 - Clearinghouses
 - Documents
 - Downloadable Data
 - Geographic Activities
 - Geographic Services
 - Live Map Services
 - Map Files
 - Offline Data
 - Static Map Images
- [-] Topic Category (ISO)

Browse


Use this page to browse resources in the geoportal.



Select one of the items in the tree to view a specific list of resources.

- Map Files
- Offline Data
- Static Map Images
- Topic Category (ISO)
 - Administrative and Political
 - Agriculture and Farming
 - Atmosphere and Climatic
 - Biology and Ecology
 - Business and Economic
 - Cadastral
 - Cultural, Society and Dem
 - Elevation and Derived Pro
 - Environment and Conserv
 - Facilities and Structures
 - Geological and Geophysica
 - Human Health and Diseas
 - Imagery and Base Maps
 - Inland Water Resources
 - Locations and Geodetic Ne
 - Military
 - Oceans and Estuaries
 - Transportation Networks
 - Utilities and Communicati

Imagery

Step 1: Select an area

Move map: 

Draw desired area:  

[Having trouble? Watch the video](#)



Step 3: Enter email address

e-mail address:

Download

Imagery

Step 1: Select an area

Move map:

Draw desired area:

[Having trouble? Watch the video](#)

Step 2: Pick year(s)

<input type="checkbox"/>	1993	Preview
<input type="checkbox"/>	2000	Preview
<input type="checkbox"/>	2005	Preview
<input type="checkbox"/>	2010	Preview
<input checked="" type="checkbox"/>	2014	Preview

Content may not reflect National Geographic's current...

Step 3: Enter email address

e-mail address:

Download



GeoSpatial Portal

[HOME](#)

[SEARCH](#)

[BROWSE](#)

[DOWNLOAD IMAGERY](#)

[LAUNCH MAP VIEWER](#)

Search

Text:

Results 1-10 of 224 record(s) [1](#) [2](#) [3](#) [4](#) [5](#) [>](#) [Last](#)

Records shown from: This Site
Click here to select different site(s) or configure search.

Expand Results [Zoom To Results](#) [Zoom To Search Area](#)

[More Search Options](#) [Clear](#)

WHEN

Intersecting Fully within

Start Date: (yyyy-mm-dd)

End Date: (yyyy-mm-dd)

NC OneMap Location - Map Service

This map service contains address points collected in 2009 and 2014 for North Carolina. These data are a compilation of the best available representation of situs addresses and their location. The Center for Geographic Information and Analysis contacted c...

[Download/Open](#) [Preview](#) [Globe \(.kml\)](#) [ArcGIS \(.nmf\)](#)
[ArcGIS \(.lyr\)](#) [Add To Map](#) [Details](#) [Metadata](#) [Zoom To](#)

WHERE

Anywhere Intersecting Fully within

Text:

North Carolina Master Address Dataset of 2014

The NC Master Address Dataset represents a compilation of the best available representation of situs addresses and their location. The Center for Geographic Information and Analysis contacted county and municipal governments to acquire this information, ...

[Download/Open](#) [Details](#) [Metadata](#) [Zoom To](#)

NC ONEMAP DATA EXPLORER

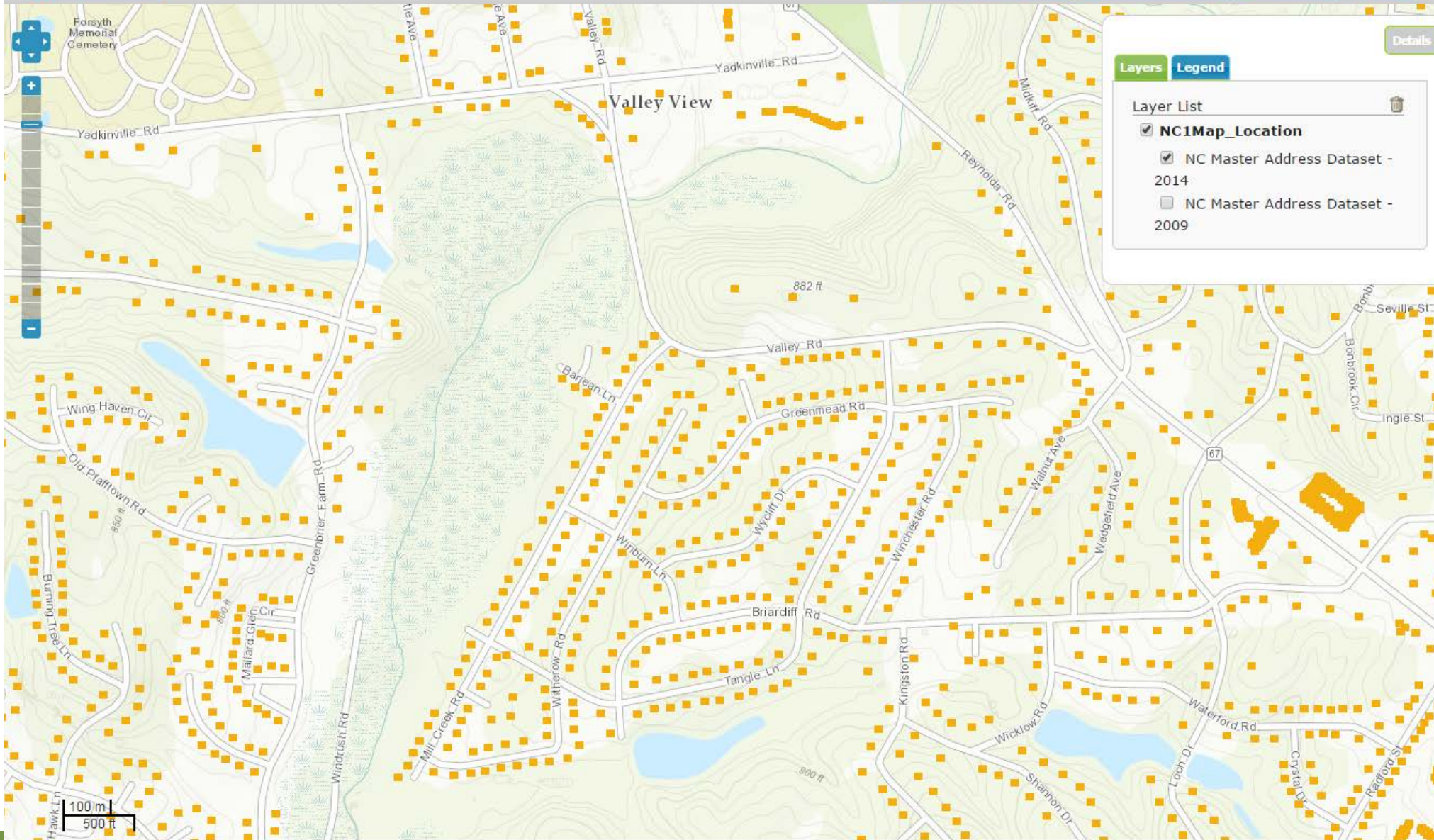
Find Services

+ Add External Service

Choose BaseMap

Feedback

Help



Search

Text:

Results 1-10 of 142 record(s)

Expand Results

[Zoom To Results](#) [Zoom To Search Area](#)

Records shown from: This Site

Click here to select different site(s) or configure search.

[More Search Options](#) [Clear](#)

WHEN

Intersecting Fully within

Start Date: (yyyy-mm-dd)

End Date: (yyyy-mm-dd)

WHERE

[NC Parcel Boundaries and Standard Fields - ArcGIS Map Service](#)

[NC Parcel Boundaries and Standard Fields - Download](#)

[NC Parcel Boundaries and Standard Fields - ArcGIS Feature Service](#)

[NC OneMap Parcels with Statewide Standardized Attributes Web Application](#)

[Washington County, NC 2004 Digital Orthos](#)

Search

Text:

Records shown from: This Site

[Click here to select different site\(s\) or configure search.](#)

[More Search Options](#) [Clear](#)

WHEN

Intersecting Fully within

Start Date: (yyyy-mm-dd)

End Date: (yyyy-mm-dd)

WHERE

Anywhere Intersecting Fully within

Text:

Results 1-10 of 142 record(s)

Expand Results

[Zoom To Results](#) [Zoom To Search Area](#)

[NC Parcel Boundaries and Standard Fields - ArcGIS Map Service](#)

[NC Parcel Boundaries and Standard Fields - Download](#)

[NC Parcel Boundaries and Standard Fields - ArcGIS Feature Service](#)

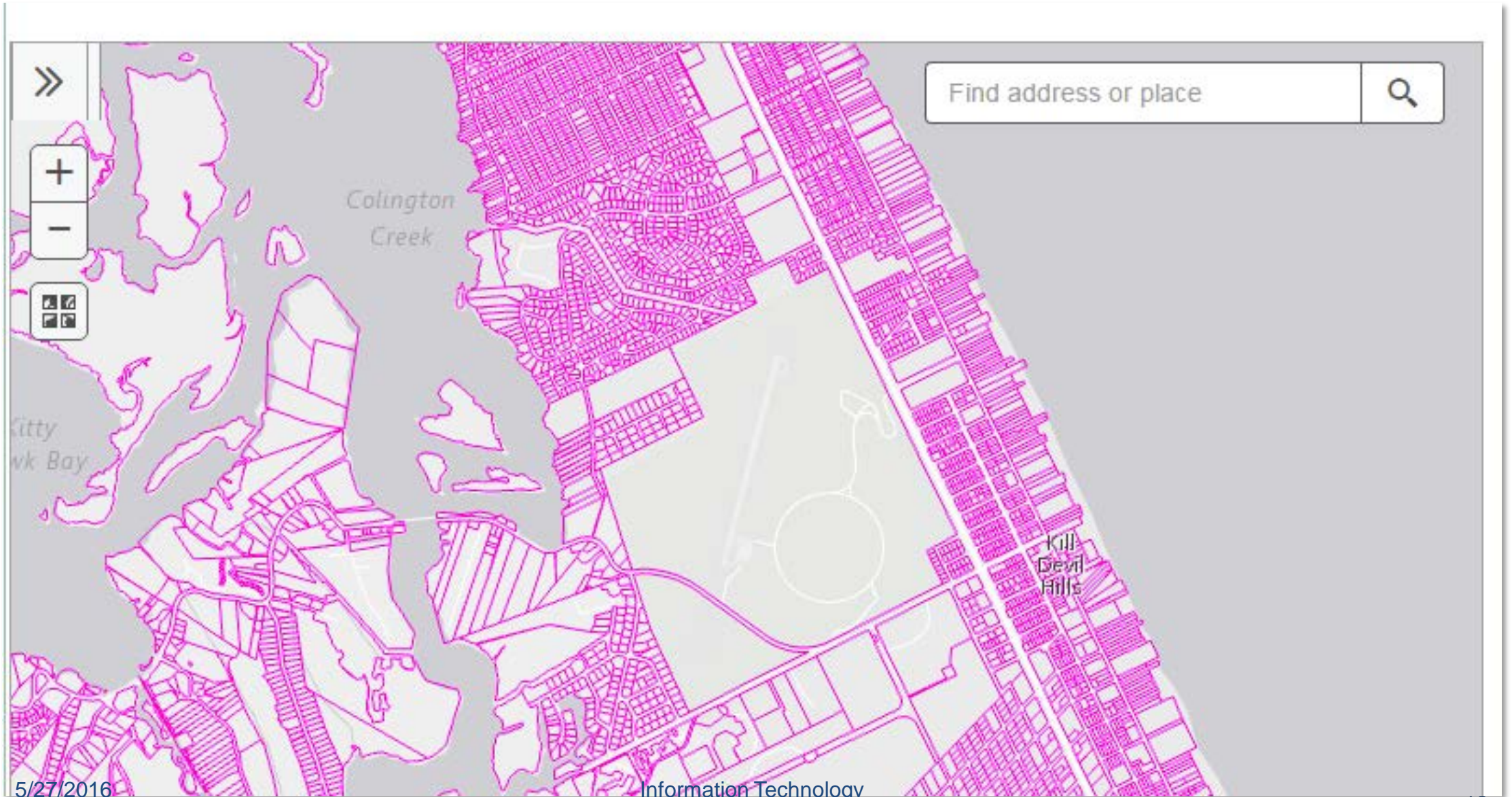
[NC OneMap Parcels with Statewide Standardized Attributes Web Application](#)

North Carolina county parcels with standardized attributes statewide.

[Download/Open](#) [Preview](#) [Details](#) [Metadata](#) [Zoom To](#)

[Washington County, NC 2004 Digital Orthos](#)

<http://www.nconemap.com/ParcelsforNorthCarolina.aspx>




The screenshot shows the NC OneMap Parcels web application interface. The top navigation bar includes the logo and the text "NC OneMap Parcels with Statewide Standardized Attributes". A search bar at the top right contains the text "NC 7, Gastonia, NC". Below the search bar, a list of search results is displayed:

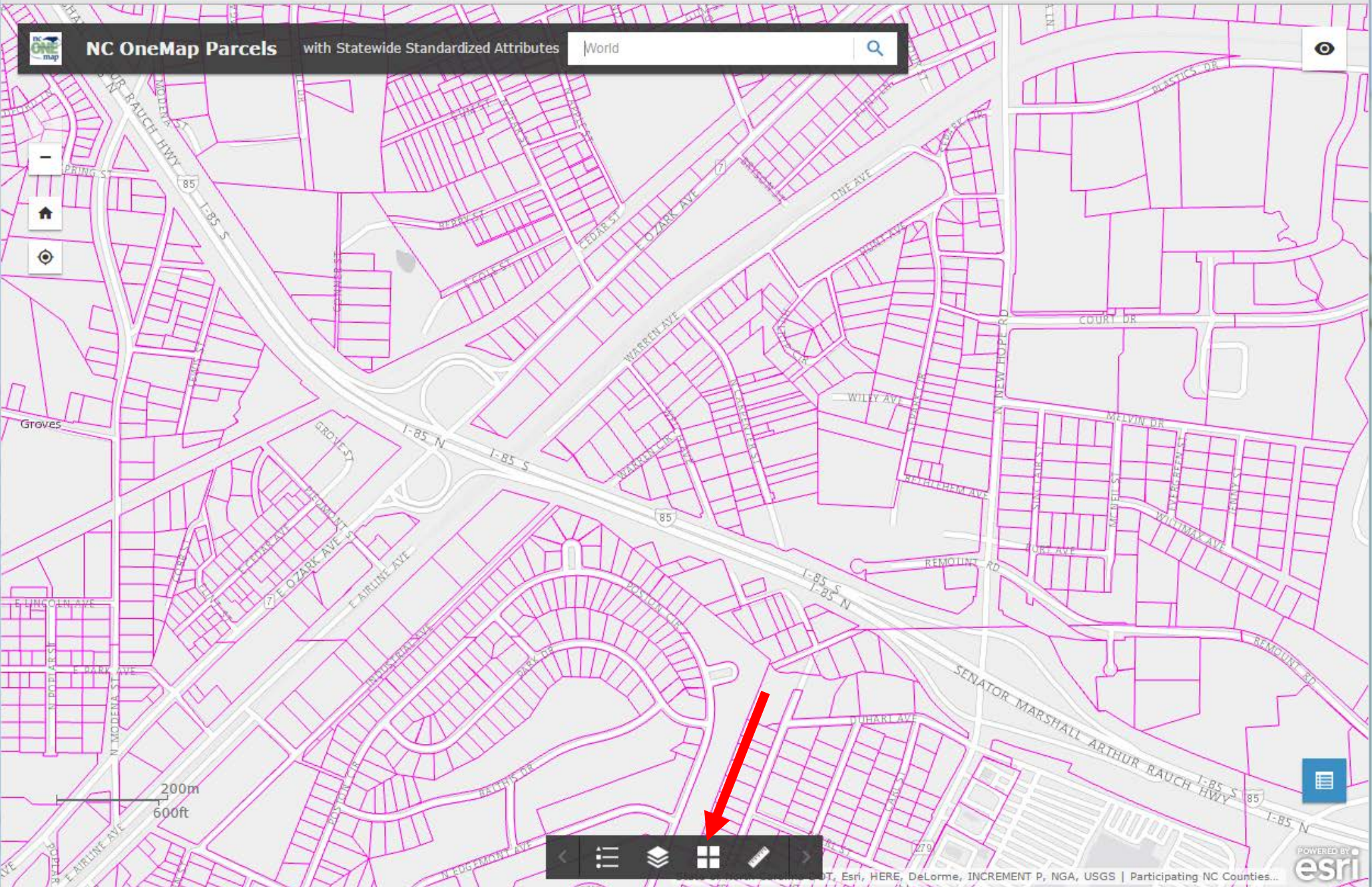
- 7 Gaston Pl, Havelock, North Carolina, 28532
- 7 Gaston St, Asheville, North Carolina, 28801
- 7 Gaston St, Franklin, North Carolina, 28734
- NC-7, Gastonia, North Carolina, 28054** (highlighted)
- NC-7, Gastonia, North Carolina, 28052
- Gastonia, North Carolina

A secondary search result popup is visible on the map, titled "Search result", which contains:

- NC-7, Gastonia, North Carolina, 28054
- [Show more results](#)
- [Zoom to](#)

The map background shows parcel boundaries in pink and blue, with labels for "Long Creek" and "Kantor Branch". The location "Spencer Mountain" is labeled in the top right corner of the map area.

 **NC OneMap Parcels** with Statewide Standardized Attributes 🔍



Navigation toolbar with icons for back, layers, full screen, and search.



PARNO	3556717347
NPARNO	37071_3556717347
ALTPARNO	118638
PARUSECODE	9101
PARUSEDESC	UNDEV OR UNUSED LAND
PARUSEDSC2	
PARUSECD2	
STRUCT	N
STRUCTNO	0
STRUCTYEAR	0
PARVALTYPE	Assessed
IMPROVAL	0.00
LANDVAL	13,125.00
PARVAL	13,125.00
Zoom to	

nconemap.maps.arcgis.com/apps/webappviewer/index.html?id=c49f804bced8479fb83d0cadf1436b25

NC OneMap Parcels with Statewide Standardized Attributes World

Atlantic Ocean

Legend

NC OneMap - Parcels

Parcels

Layer List

Operational Layers

- NC OneMap - Parcels
- NC OneMap - Latest Orthoimagery (cached)

Basemap Gallery

- Dark Gray Canvas
- Imagery
- Imagery with Labels
- Light Gray Canvas
- National Geographic
- Oceans
- OpenStreetMap
- Streets

Measurement

Miles

Measurement Result

0.28 Miles

NC OneMap Parcels with Statewide Standardized Attributes

Basemap Gallery

- National Geographic
- Oceans
- OpenStreetMap
- Streets
- Terrain with Labels
- Topographic (Selected)
- USA Topo Maps
- USGS National Map

Print

Total: **1 sheet of paper**

Print Cancel

Destination

 RICOH Aficio MP 5001 ...

Change...

Pages

All

e.g. 1-5, 8, 11-13

Copies

1 + -

Layout

Portrait

Options

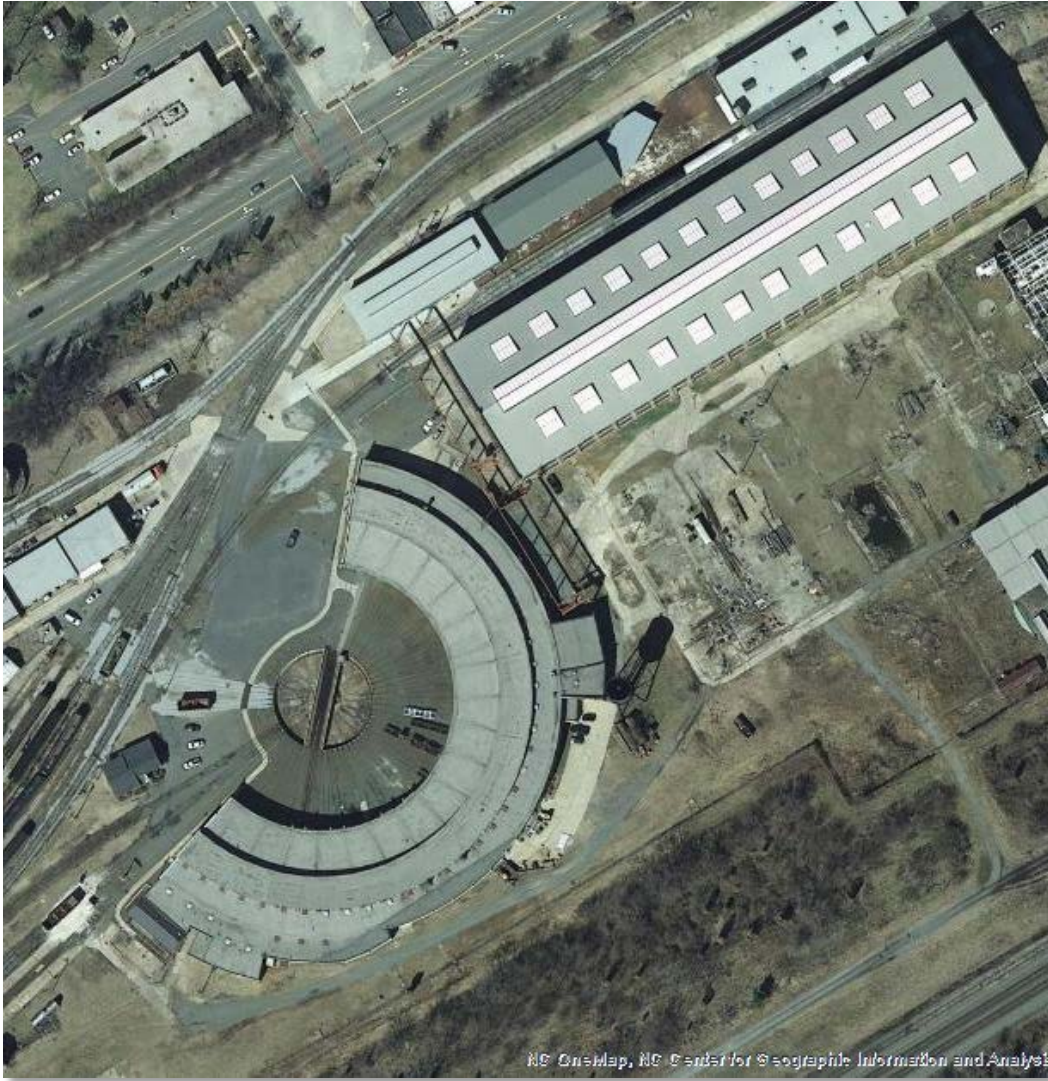
Two-sided

+ More settings

Print using system dialog... (Ctrl+Shift+P)



Center for Geographic Information & Analysis



Jeff Brown
Coordination Program Manager
jeff.brown@nc.gov
919-754-6584

Tim Johnson
Director, CGIA
tim.johnson@nc.gov
919-754-6588

Second Section of Slide Set





5/27/2016

Information Technology



5/27/2016

Information Technology







Discovering and Using Data
NC OneMap





Sharing quality data is good for North Carolina



A good map + collaboration = mutual benefits

Value of Statewide Datasets

Consistency – data standardized across counties and regions

Efficiency – data can be analyzed comprehensively

Trust – data documented from state and local government sources

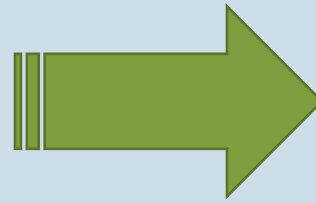
Capability - do more in less time

NC OneMap

What?



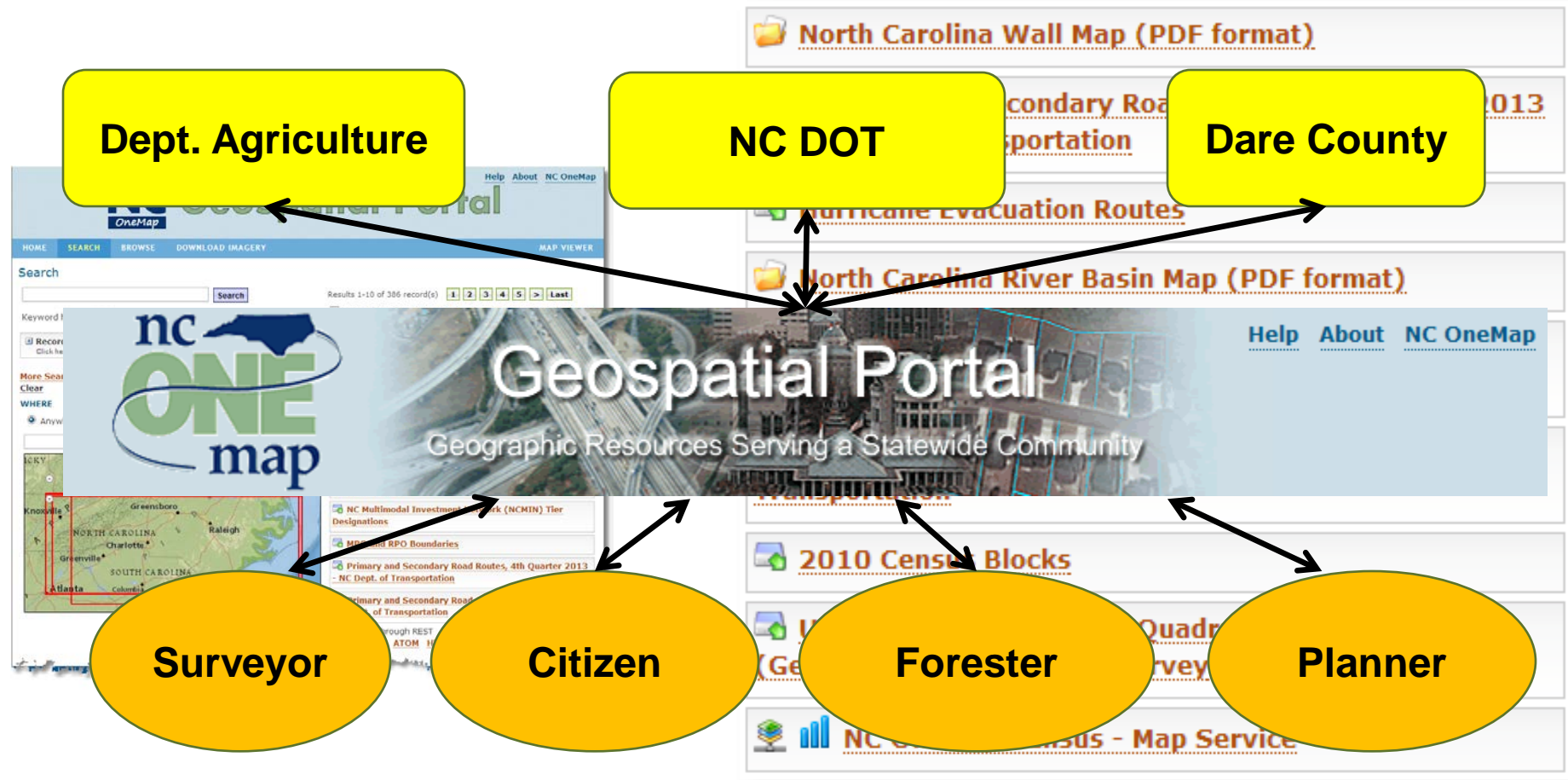
- Partnerships
- Data sharing
- Data standards
- Documentation
- Archiving



Geospatial Portal

- Data downloads (~300)
- Map services (~90)

NC OneMap Geospatial Portal



NC OneMap

Imagery

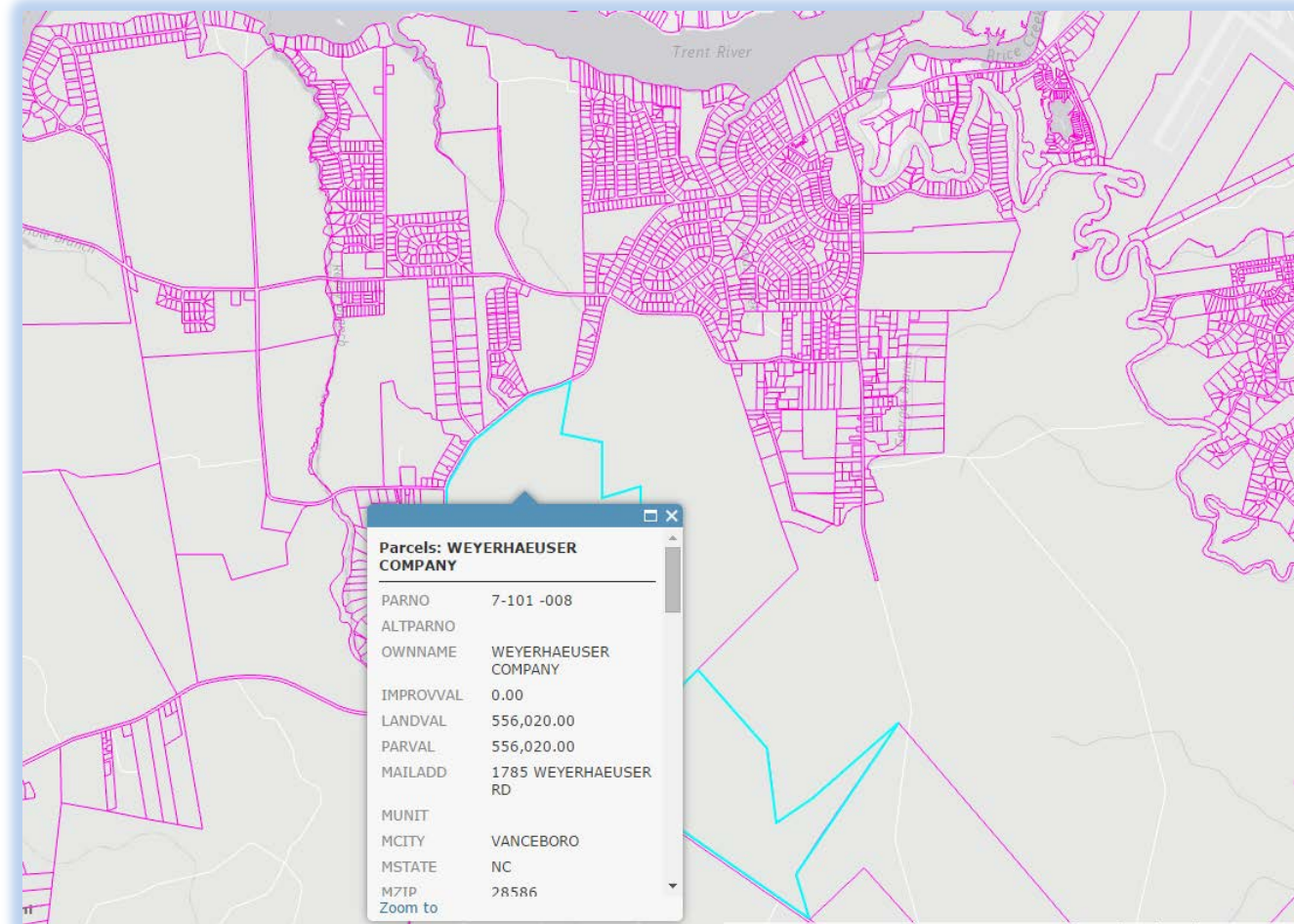
- Historical (1996 – 2009)
- Orthoimagery Program (2010+)
 - Statewide coverage
 - 6" resolution
 - True color, leaf off
 - Updated - fly 25% every year
 - No area with imagery older than 4 yrs.



NC OneMap

Parcels

- Statewide coverage
- Provided by county governments
- ~5.6 million parcels, 30+ attributes
- Updated regularly (TRANSFDATE field)

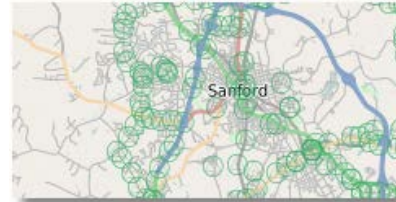




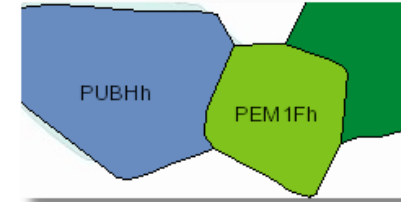
Flood Zones



Geodetic Control Pts.



Wetlands (NWI)



Soils



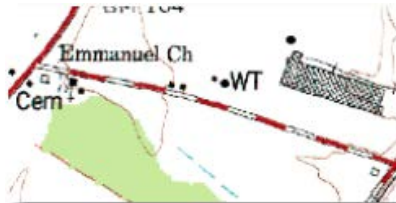
Hydrography



Political Boundaries



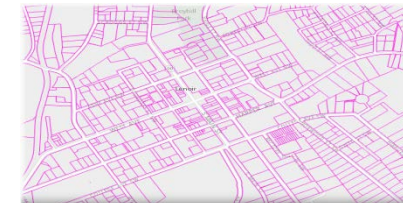
USGS Quads



Water Sources



Parcels





- **Files** to download and use with GIS software
 - Store locally
 - Check with source for updates
 - Functionality depends on software
 - Archive with project data
- **Web services** to consume in GIS software or applications
 - Streaming from a server
 - No local storage
 - Streams the latest updated service
 - Functionality varies (map service v. feature service)

Web Map Service Formats



AutoCad Civil 3D / Map 3D



QGIS (free)



Gaia 3 (free)



Esri ArcGIS



Bentley
Microstation

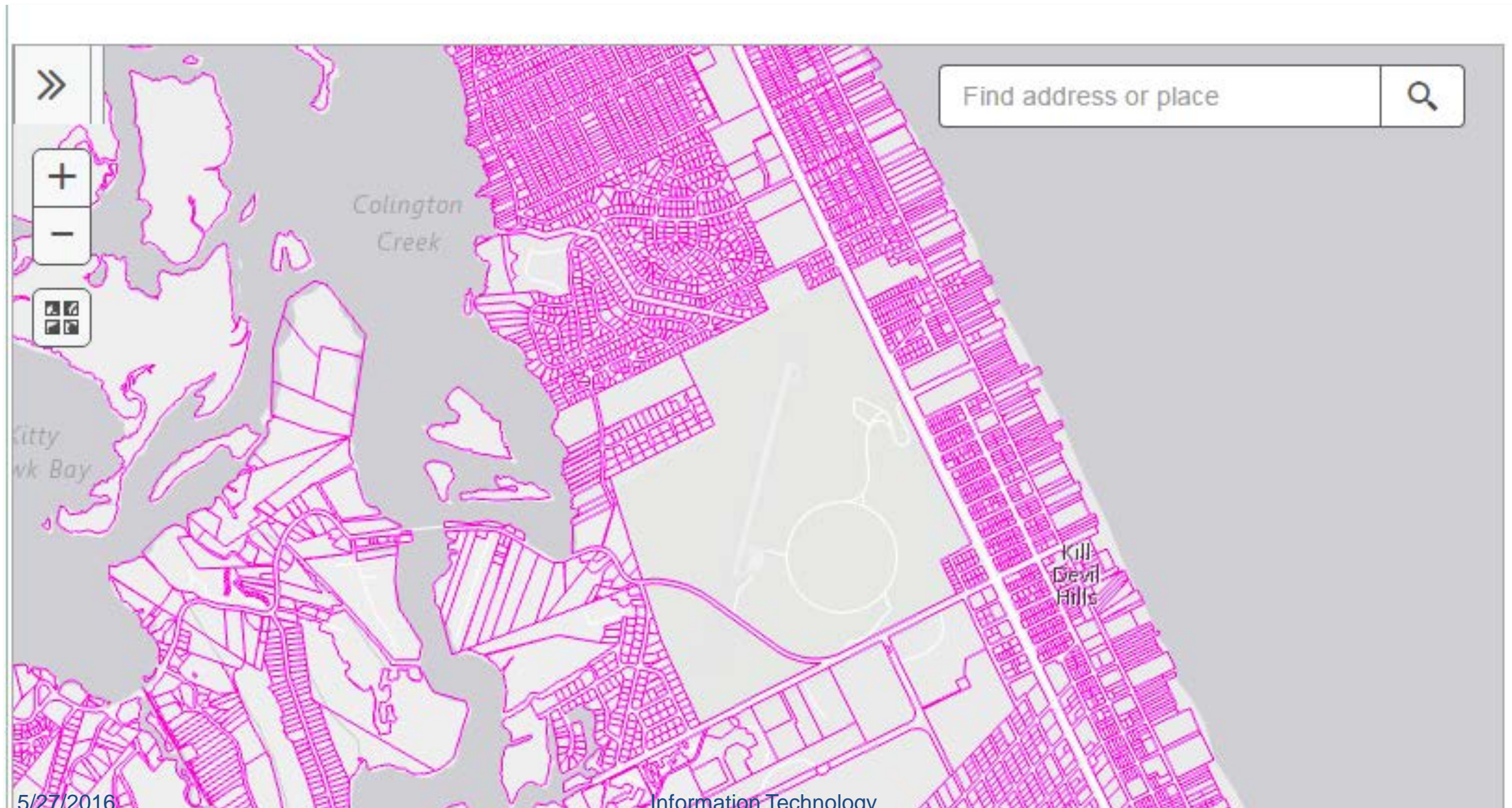
Bentley Microstation V8i

Geospatial Portal Demo

How to Search for Data

<http://data.nconemap.gov>

<http://www.nconemap.com/ParcelsforNorthCarolina.aspx>



And Now This

Windsor was established by an act of the Colonial Assembly in 1768 at the site known as what?

For Another Snack

Windsor was entered in the National Register of Historic Places in what year?

Bonus: who won the ACC men's basketball tournament that year?

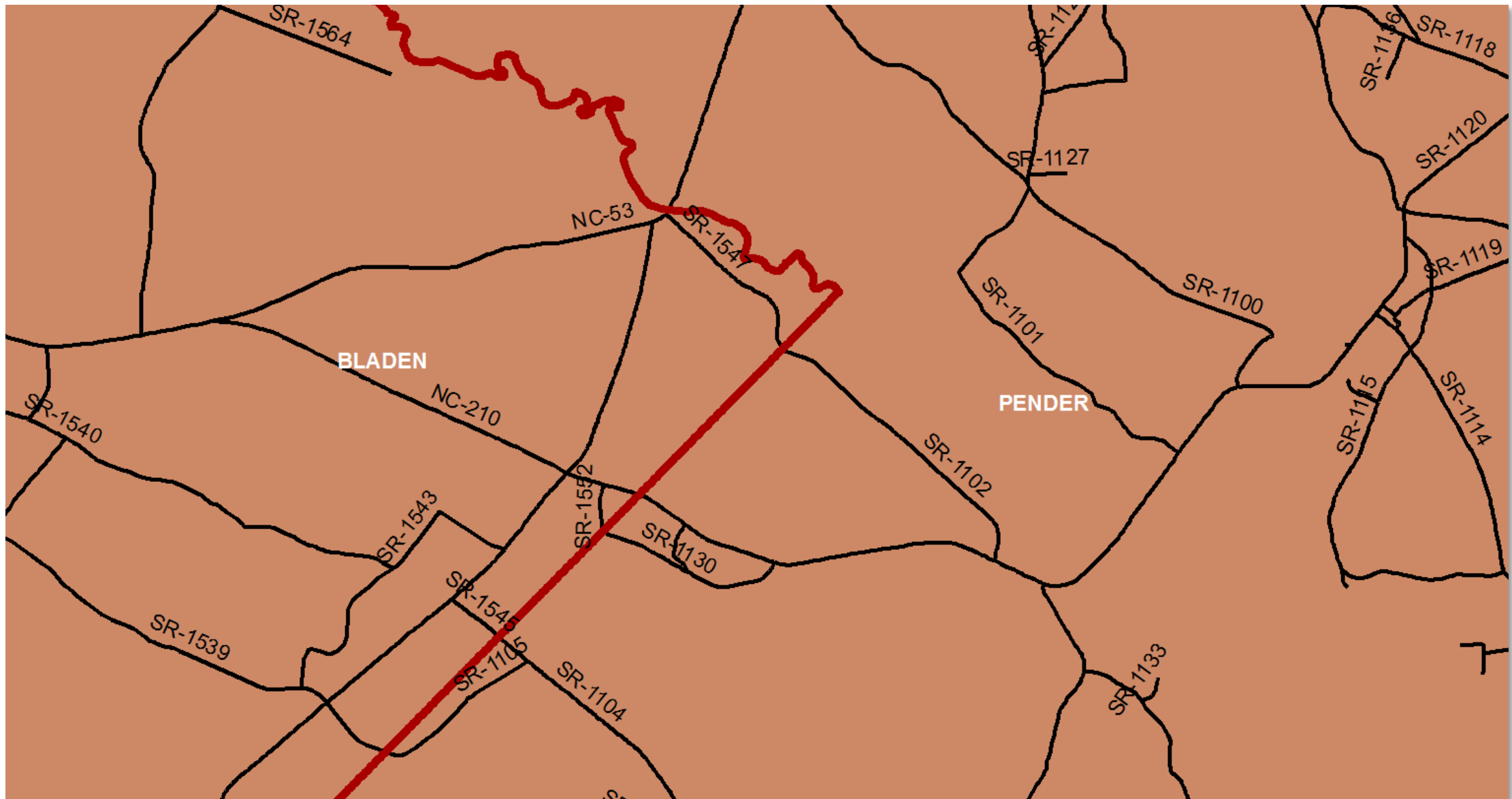
For Another Snack

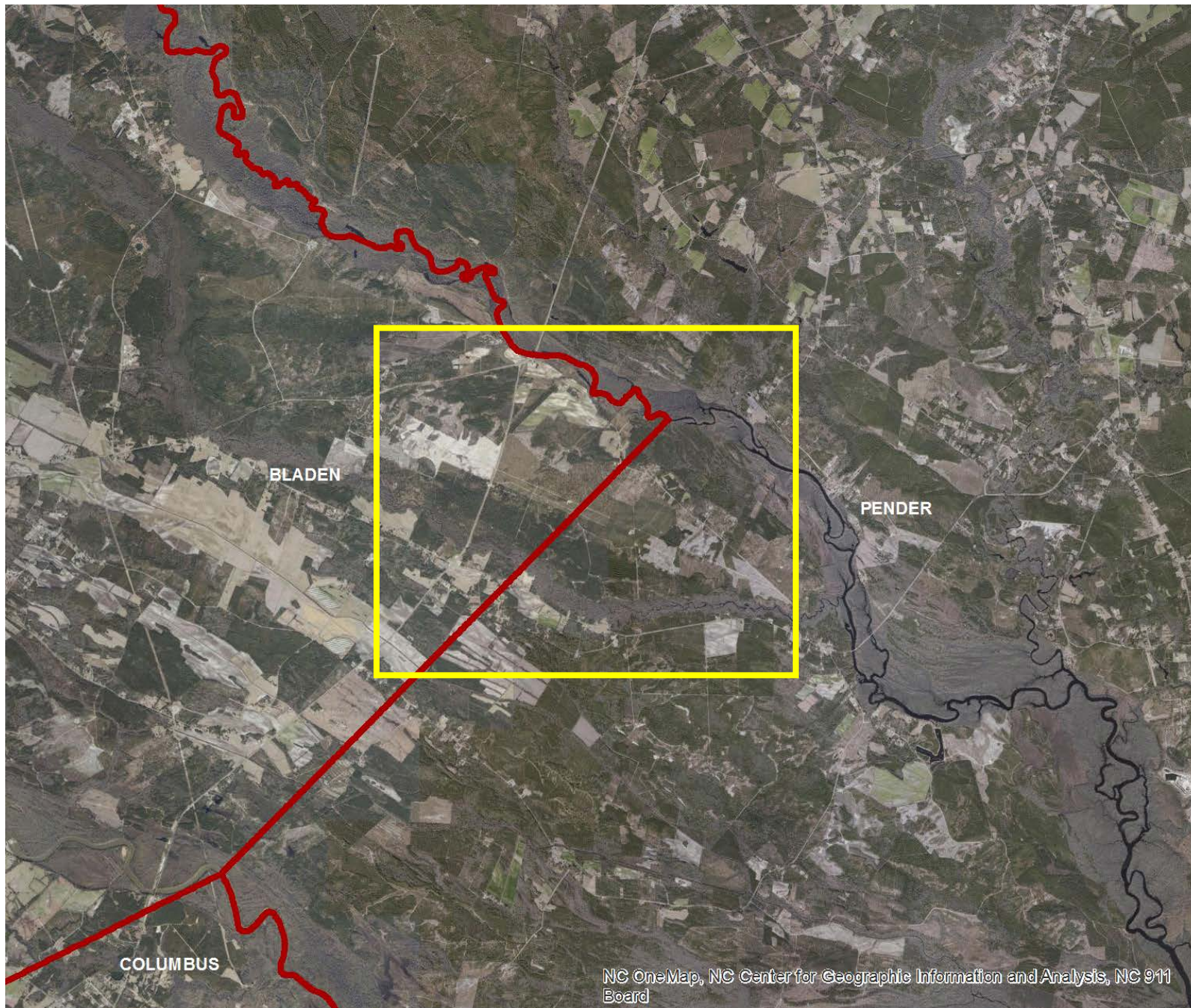
Which of the following is not a strategic business cluster for Bertie County (2013)?

- A. Agribusiness
- B. Bio-mass and energy
- C. Advanced manufacturing
- D. Adventure tourism
- E. Waterfront development

Geographic Information Matters!











Layers

NC1Map_Parcels

County Boundaries



Parcel Centroids



Parcels

IMPROVAL

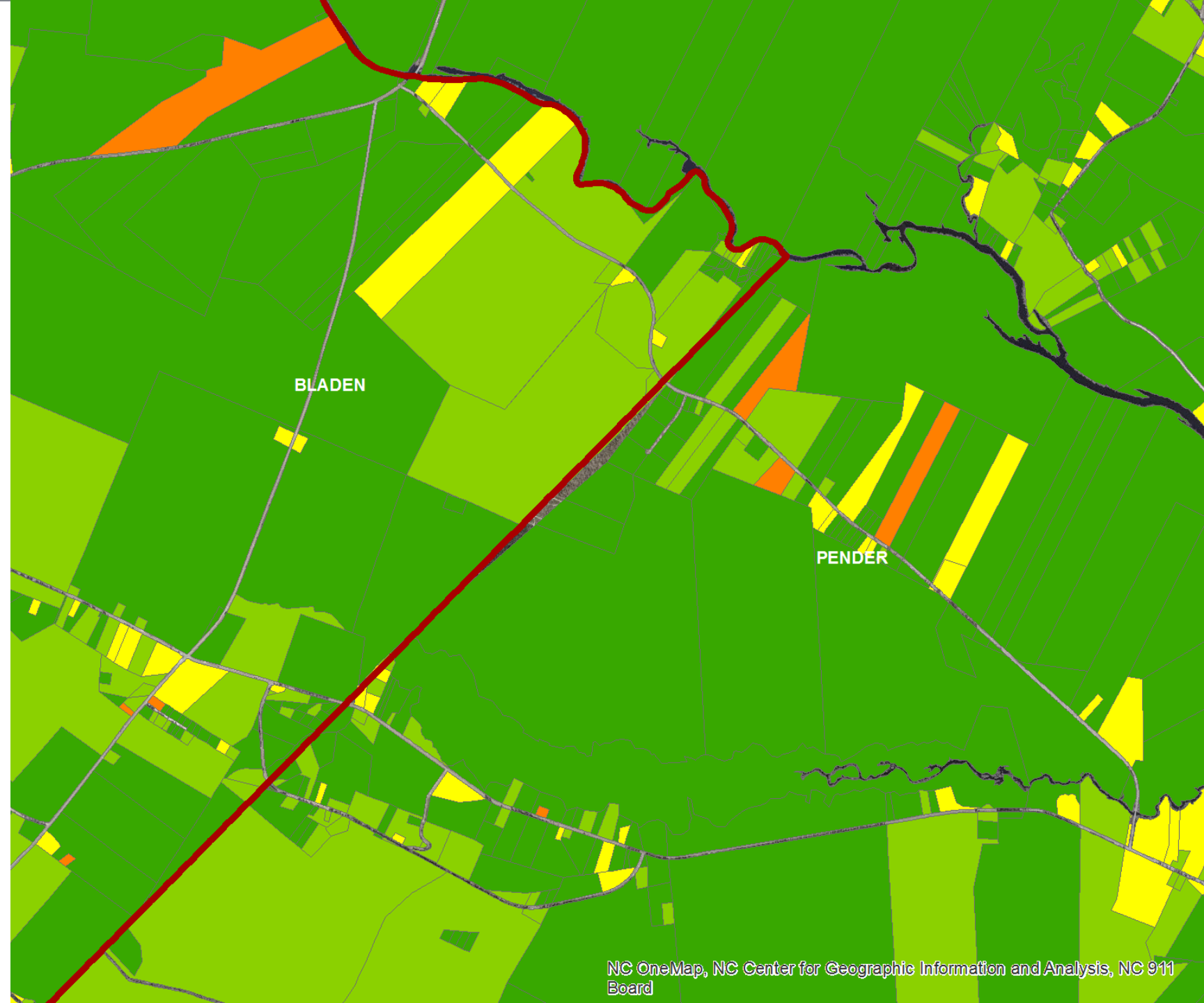
0

1 - 50,000

50,000 - 200,000

200,000 - 500,000

500,000 or more



Identify

Identify from: Parcels

NC
NC

Location: 682,006.153 80,677.630 Meters

Field	Value
OBJECTID	1858648
STNAME	NC
STFIPS	37
CNTYNAME	Bladen
CNTYFIPS	017
STCNTYFIPS	37017
GNISID	1026336
SOURCEAGNT	Bladen County Assessor
PARNO	2236741401
NPARNO	37017_2236741401
ALTPARNO	17967
PARUSECODE	
PARUSEDESC	RURAL IMPROVED
PARUSEDSC2	
PARUSECD2	37W
STRUCT	Y
MULTISTRUC	U
STRUCTYEAR	0
PARVALTYPE	Taxable
IMPROVVAL	309680
LANDVAL	17580
PARVAL	327260
OWNTYPE	
OWNNAME	SIMMONS ANDREW JACKSON JR ETUX SIMMON
OWNFRST	
OWNLAST	
SUBSURFOWN	

Identify

Identify from: Parcels

NC

Location: 685,244.660 78,963.127 Meters

Field	Value
OBJECTID	2469204
STNAME	NC
STFIPS	37
CNTYNAME	Pender
CNTYFIPS	141
STCNTYFIPS	37141
GNISID	1026129
SOURCEAGNT	Pender County Assessor
PARNO	2245-89-0184-0000
NPARNO	
ALTPARNO	45058
PARUSECODE	
PARUSEDESC	
PARUSEDSC2	
PARUSECD2	
STRUCT	Y
MULTISTRUC	U
STRUCTYEAR	0
PARVALTYPE	Taxable
IMPROVVAL	318396
LANDVAL	51720
PARVAL	370116
OWNTYPE	
OWNNAME	WEAVER ROYAL WORTH III et al
OWNFRST	
OWNLAST	
SURSUREOWN	



Economic Development Example

Scenario: Industry seeking to develop site in NC

Criteria:

- Vacant land at least 20 acres
- Near US Highway interchange
- Polk or Rutherford County

Supporting Data:

- Imagery
- Transportation
- Property boundaries
- Address points
- Elevation

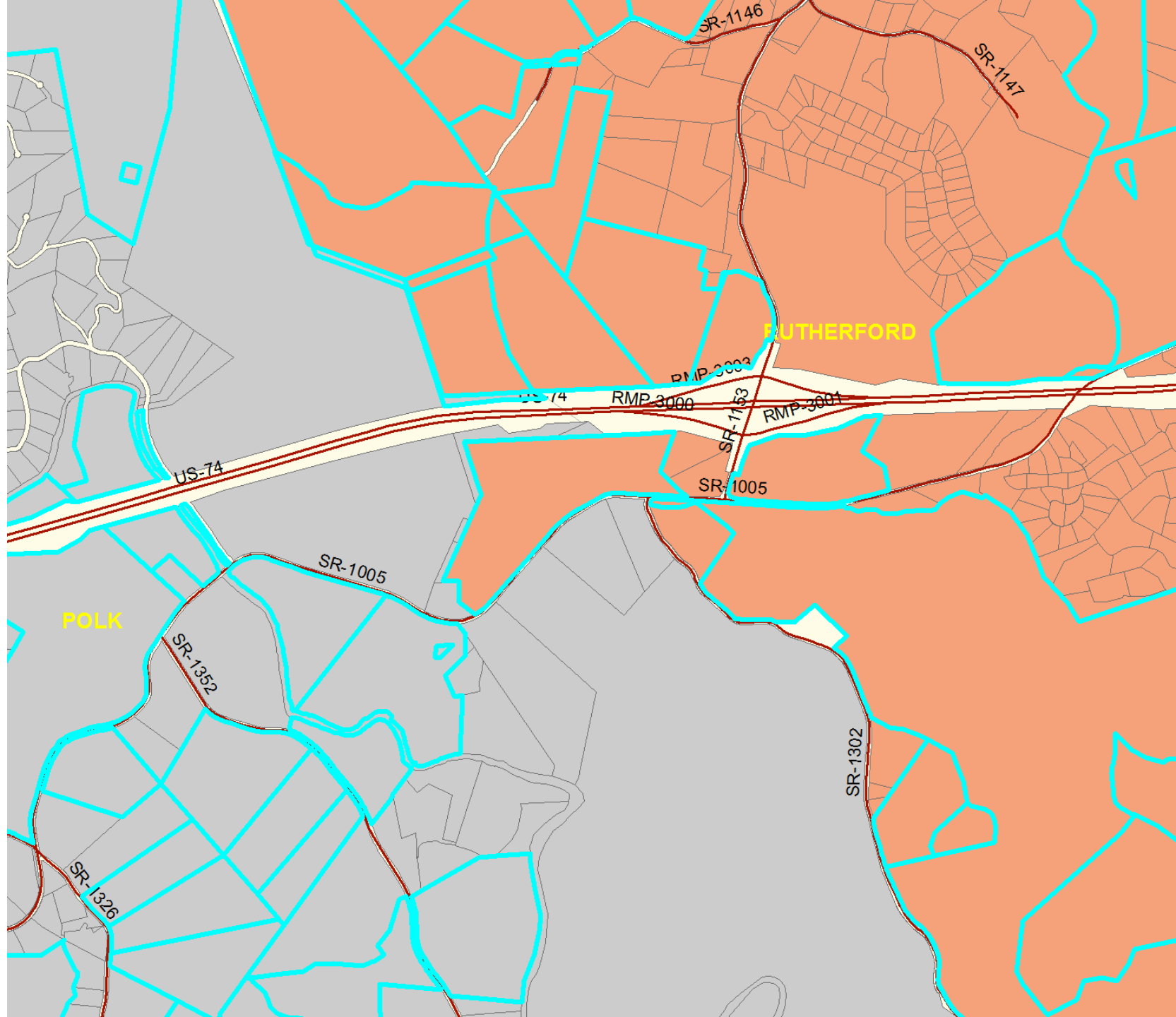


Where are they?

Show potential sites that meet developer criteria

Potential sites meet criteria on both sides of county boundary

With standardized framework data, results can be queried and viewed at one time

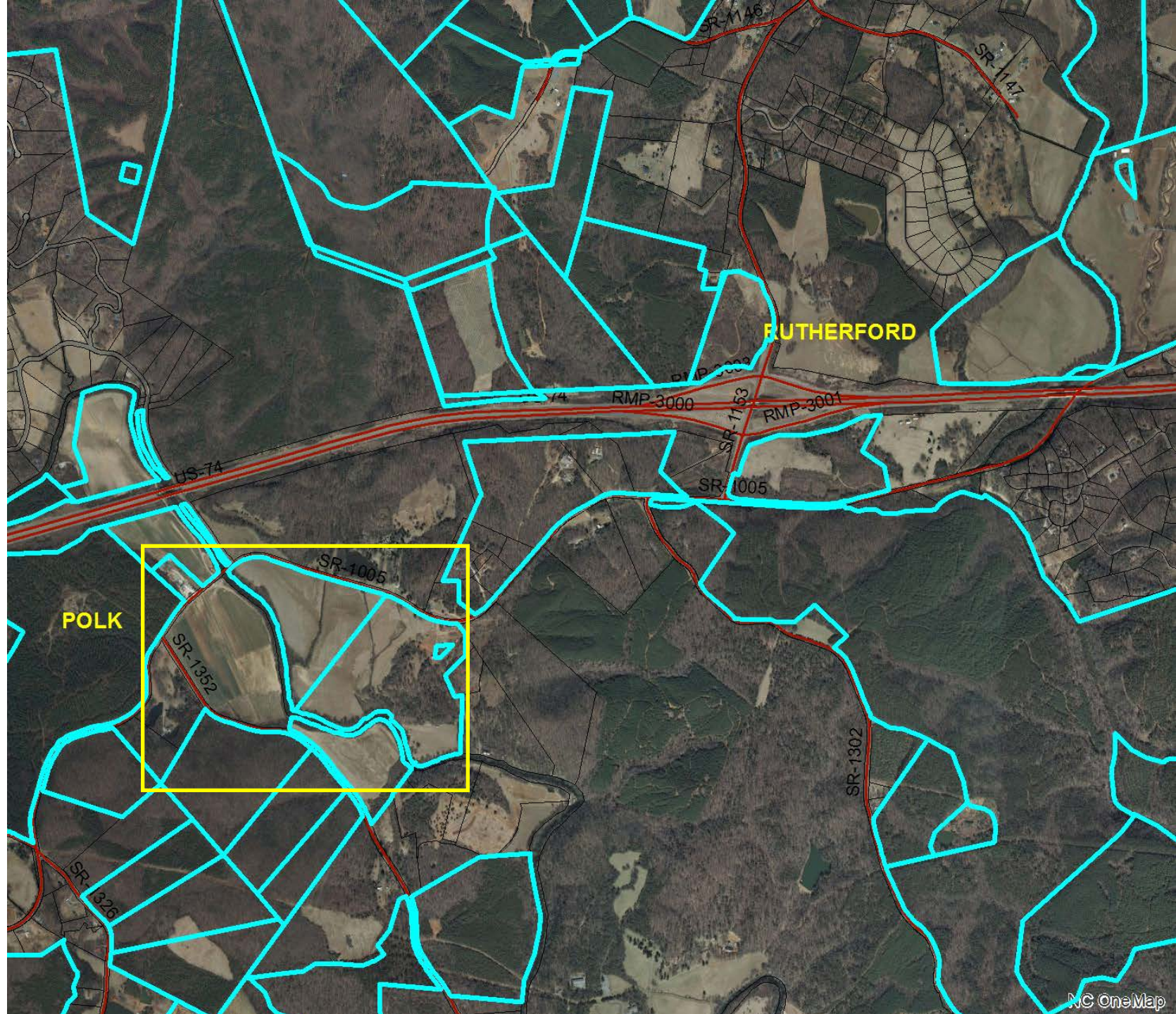


What does it look like?

Display the imagery

Farmland? Forest?
Adjacent parcels?

Select an area of interest
for more detail (yellow)



What is the site like?

Add 20-foot elevation contours

Add address points (orange) for additional reference



Adding Parcel Services in ArcGIS

Search

The connection url to NC OneMap services has changed to **SERVICES.NCONEMAP.GOV**
Please update your bookmarks in your desktop software.

Keyword hint enabled.

+ Records shown from: NC OneMap GeoSpatial Portal

[Click here to select different site\(s\) or configure search.](#)

More Search Options

[Clear](#)

WHERE

Anywhere Intersecting Fully within



Results 1-10 of 158 record(s) [1](#) [2](#) [3](#) [4](#) [5](#) [>](#) [Last](#)

Expand results [Zoom To Results](#) [Zoom To Searched Area](#)

[NC Parcel Boundaries and Standard Fields - ArcGIS Map Service](#)

[NC Parcel Boundaries and Standard Fields - ArcGIS Feature Service](#)

This digital geospatial dataset represents parcel boundaries with standard core attributes for a collection of parcel data from North Carolina county data producers and the Eastern Band of Cherokee Indians. The Integrated Cadastral Data Exchange project t...

[Download/Open](#) [Preview](#) [Add To Map](#) [Details](#)
[Metadata XML](#) [Zoom To](#)

[NC Parcel Boundaries and Standard Fields - Download](#)

ArcGIS REST Services Directory

Home > [services](#) > [NC1Map_Parcels \(FeatureServer\)](#)

[JSON](#) | [SOAP](#)

NC1Map_Parcels (FeatureServer)

View In: [ArcGIS.com Map](#)

View Footprint In: [ArcGIS.com Map](#)

Service Description: This digital geospatial dataset represents parcel boundaries with sta Carolina county data producers and the Eastern Band of Cherokee Indians. The Integrated county data producers to create a standardized dataset with consistent attributes. The sou producers. This dataset includes a core set of cadastral attributes including ownership, acr (parcel boundaries) and points (geometric center) representing each property.

Has Versioned Data: false

MaxRecordCount: 8000

Supported Query Formats: JSON, AMF

Layers:

- [County Boundaries](#) (0)
- [Parcel Centroids](#) (1)
- [Parcels](#) (2)
- [Counties Contributing Parcel Data](#) (3)

Description:

Copyright Text: Participating NC Counties, NCCGIA, NC OneMap, US EPA

Spatial Reference: 102719 (2264)

Initial Extent:

services.nconemap.gov/arcgis/rest/services

ArcGIS REST Services Directory

Home > [services](#)

[JSON](#) | [SOAP](#)

Folder: /

Current Version: 10.3

View Footprints In: [ArcGIS.com Map](#)

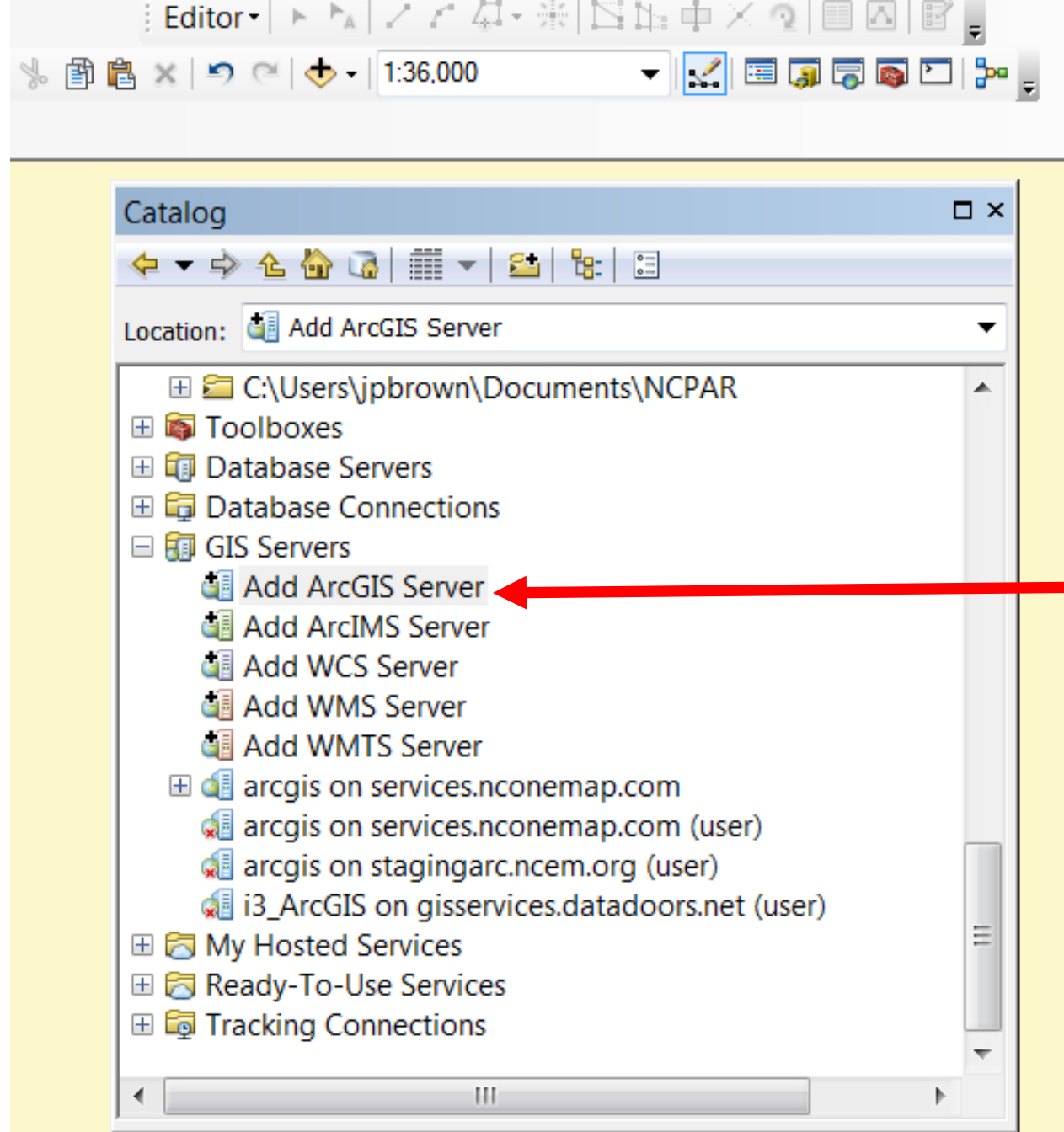
Folders:

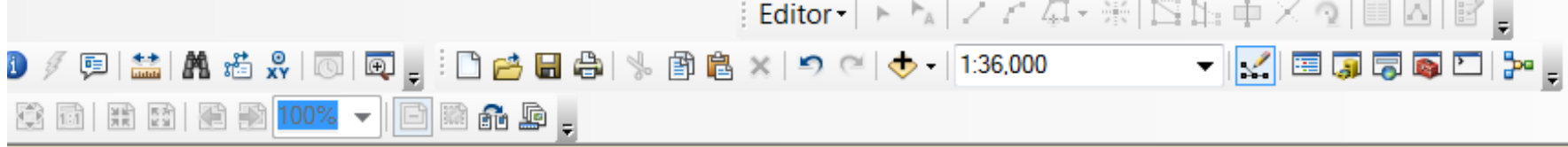
- [Elevation](#)
- [hostedapps](#)
- [Imagery](#)
- [ImageryProjectData](#)
- [ncgis2015](#)
- [ncgov_portal](#)
- [System](#)
- [test](#)
- [Utilities](#)

Services:

- [Artificial Reef Sonar Scans](#) (ImageServer)
- [NC1Map Animal](#) (MapServer)
- [NC1Map Boundaries](#) (MapServer)
- [NC1Map Census](#) (MapServer)
- [NC1Map Ecosystem Enhancement Program](#) (MapServe
- [NC1Map Education](#) (MapServer)

ArcCatalog





Catalog

ments\NCPAR

nap.com
nap.com (user)
n.org (user)
datadoors.net (user)

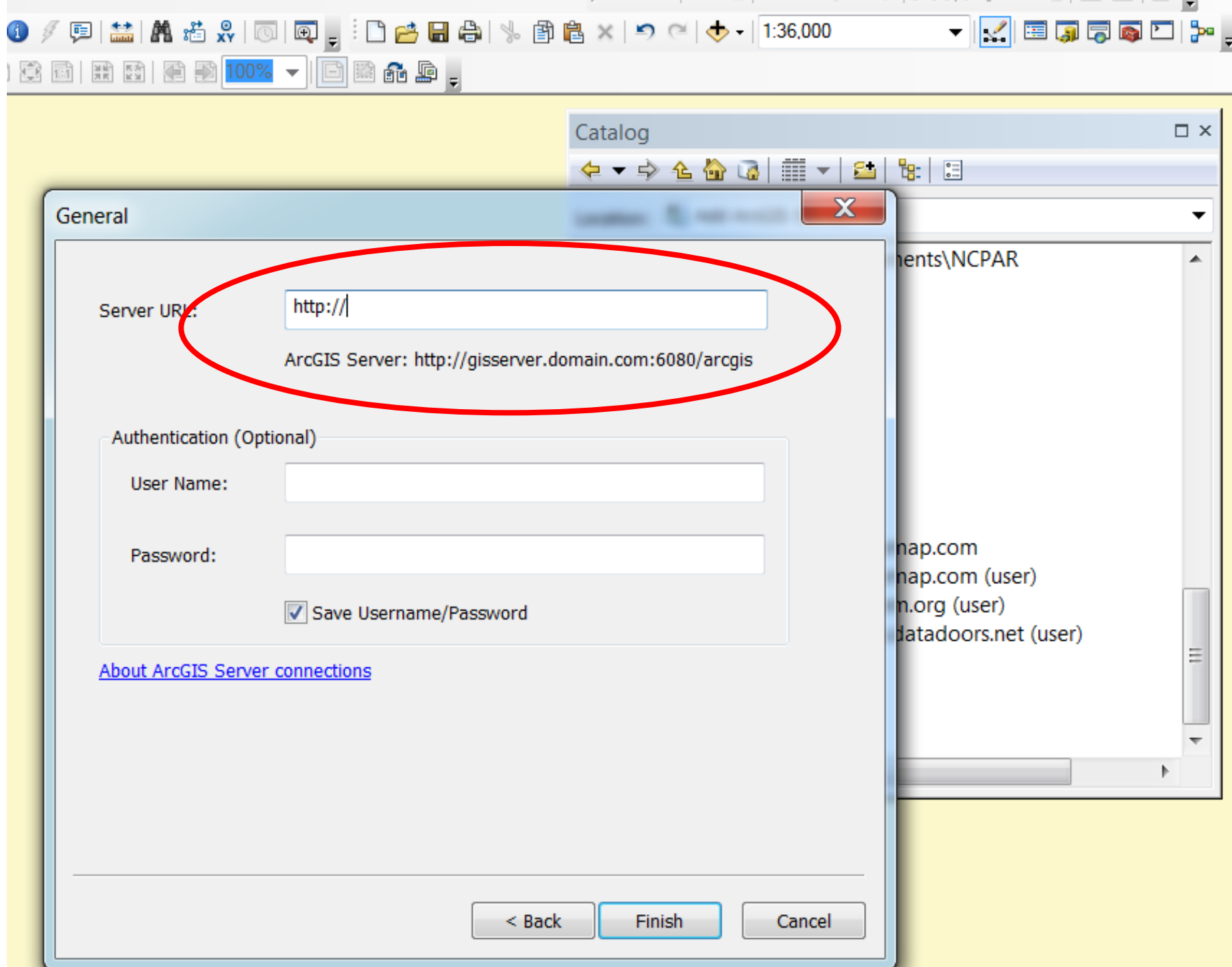
Add ArcGIS Server

This wizard guides you through the process of making a connection to an ArcGIS Server. You can create a connection to use, publish, or administer GIS services.

What would you like to do?

- Use GIS services
- Publish GIS services
- Administer GIS server

< Back Next > Cancel



General



Server URL:

http://services.nconemap.gov/arcgis/rest/services

ArcGIS Server: http://gisserver.domain.com:6080/arcgis

Authentication (Optional)

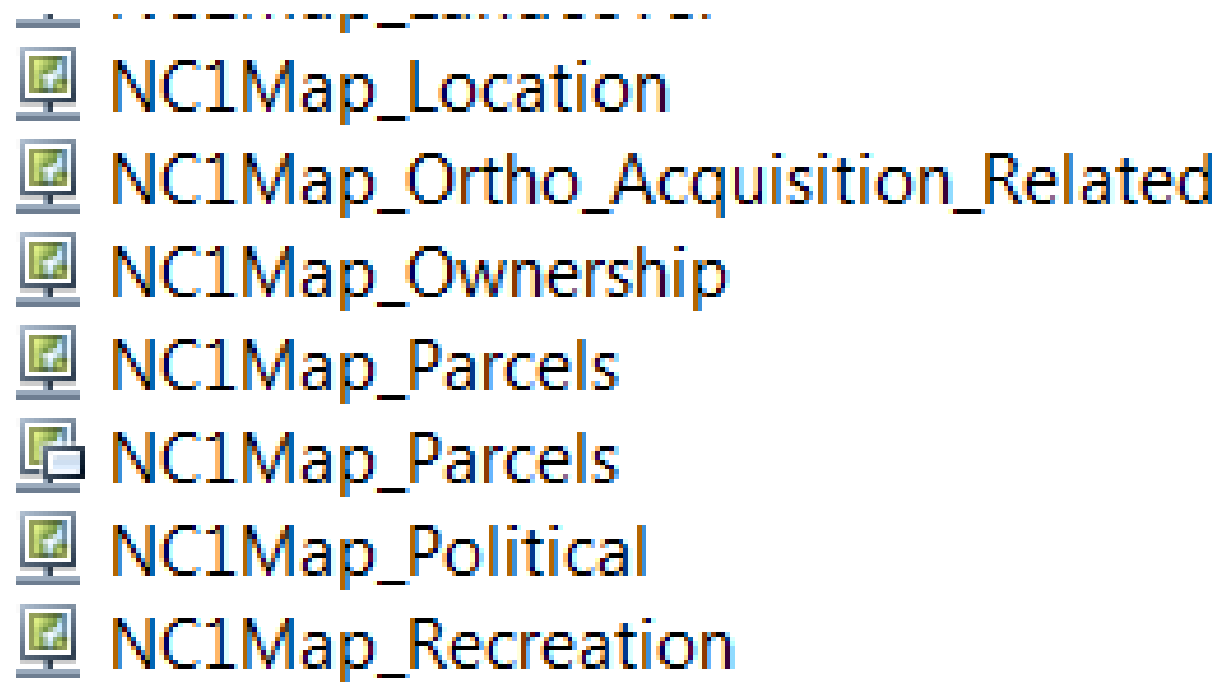
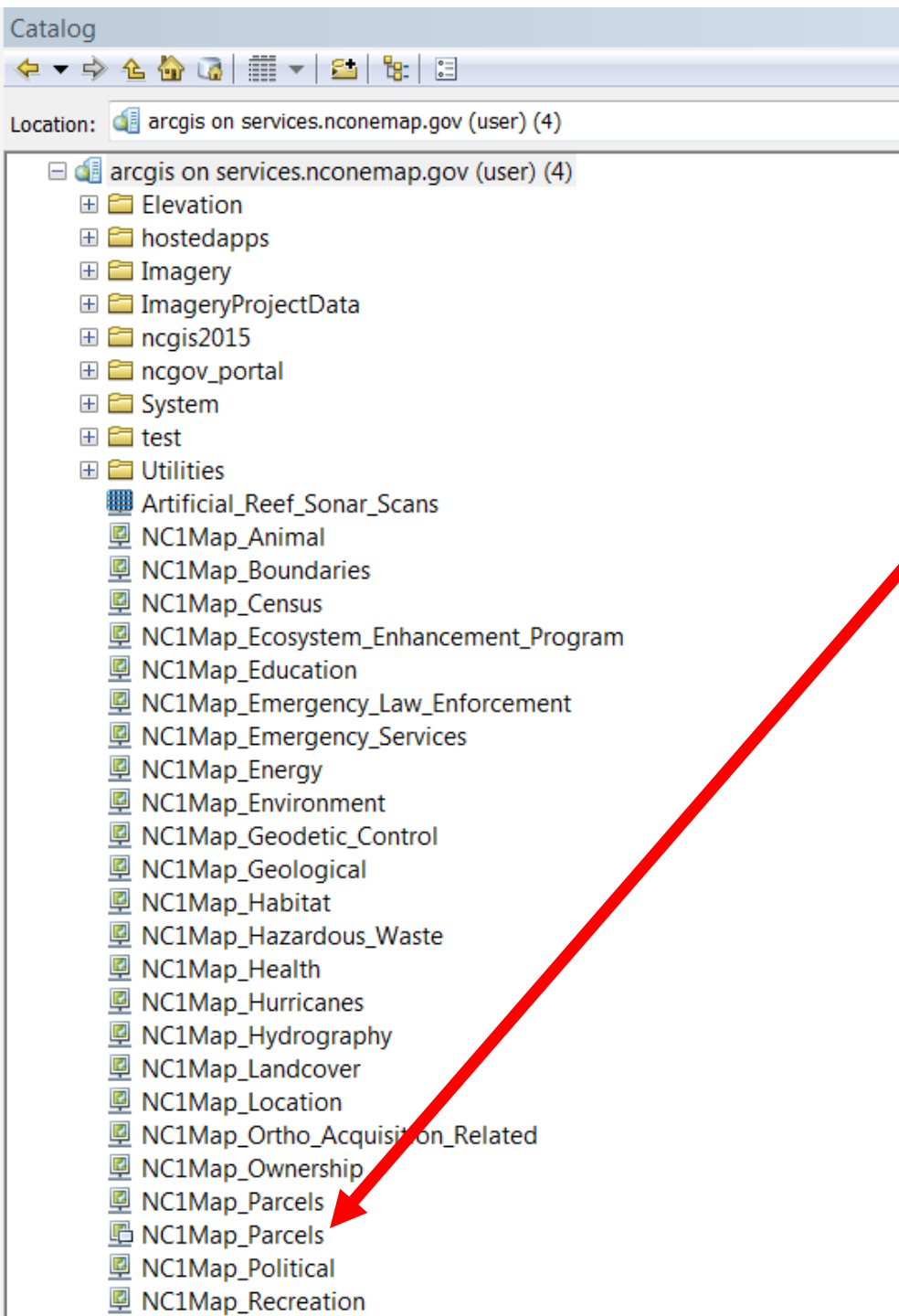
User Name:

Password:




Save Username/Password

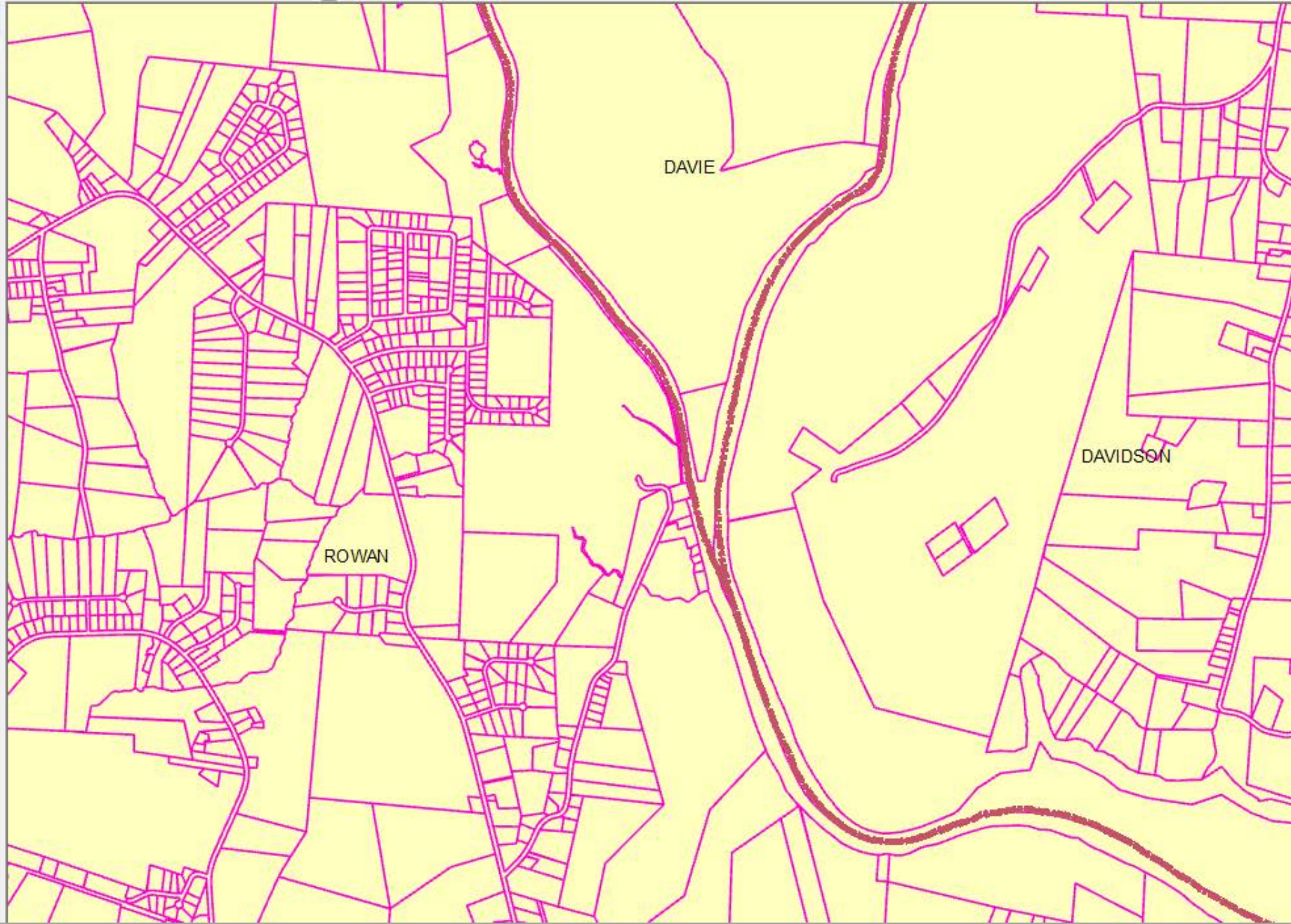
[About ArcGIS Server connections](#)

< Back Finish Cancel



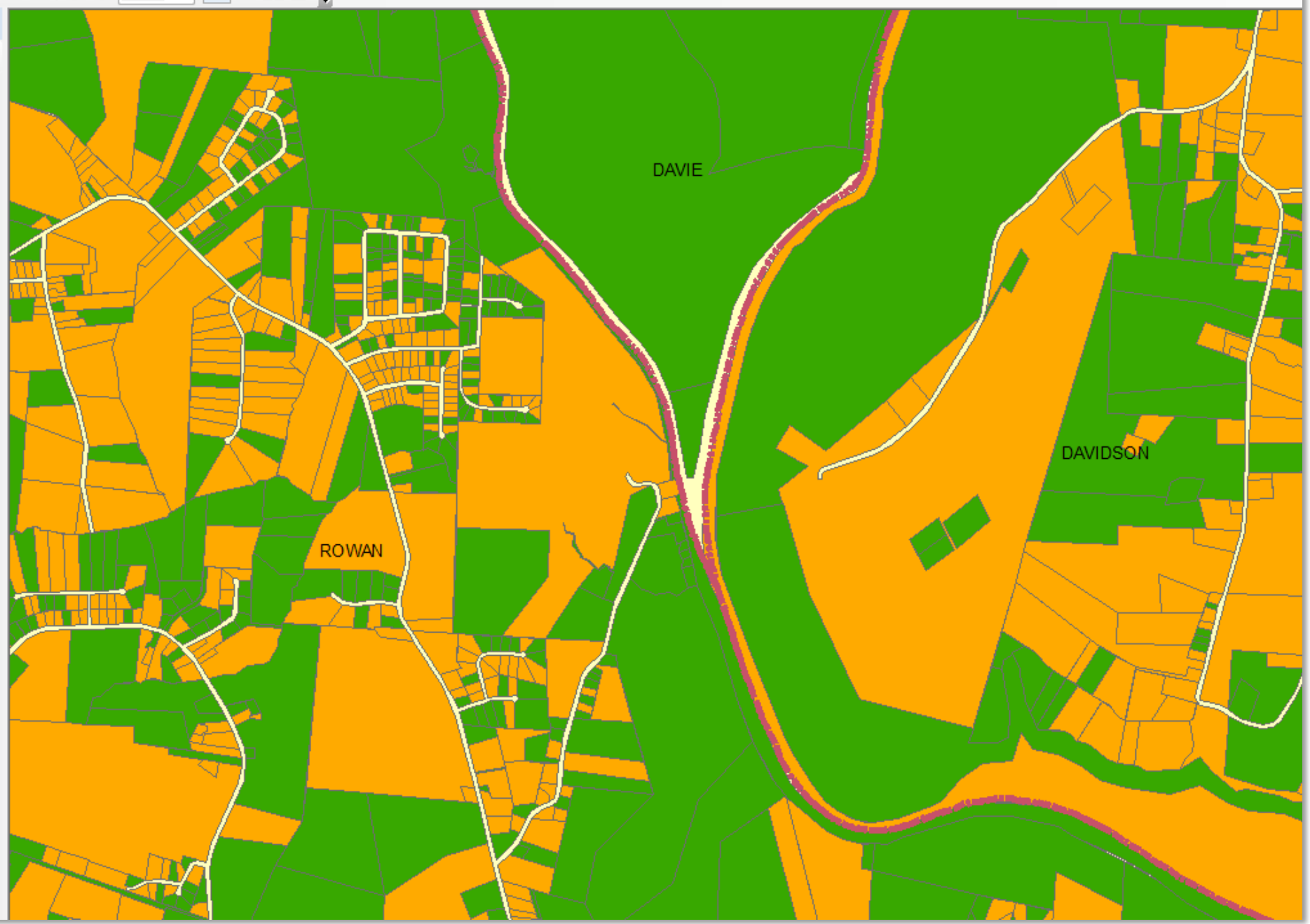


- Layers
 - CountyBoundary
 - 
 - NC1Map_Parcels
 - Parcel Centroids
 - Parcels
 - 
 - Imagery\Orthoimagery_Latest
 - Imagery\Orthoimagery_All
 - CountyBoundary
 - 





- Layers
 - CountyBoundary
 - NC1Map_Parcels
 - Parcel Centroids
 - Parcels
 - IMPROVAL
 - Less than \$10,000
 - Over \$10,000
 - NC1Map_Parcels
 - Parcel Centroids
 - Parcels
 - Imagery\Orthoimagery_Latest
 - Imagery\Orthoimagery_All
 - CountyBoundary



Adding Parcel Services in Other Software

Search

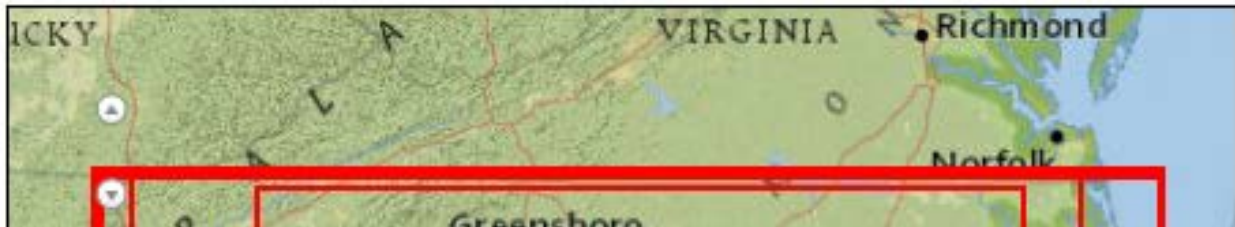
Records shown from: NC OneMap GeoSpatial Portal
Click here to select different site(s) or configure search.

More Search Options

[Clear](#)

WHERE

Anywhere Intersecting Fully within

Results 1-10 of 160 record(s) [1](#) [2](#) [3](#) [4](#) [5](#) [>](#) [Last](#)

Expand results [Zoom To Results](#) [Zoom To Searched Area](#)

NC Parcel Boundaries and Standard Fields - ArcGIS Map Service

This digital geospatial dataset represents parcel boundaries with standard core attributes for a collection of parcel data from North Carolina county data producers and the Eastern Band of Cherokee Indians. The Integrated Cadastral Data Exchange project ...

[Download/Open](#) [Preview](#) [Globe \(.kml\)](#)
[ArcGIS Explorer \(.nmf\)](#) [ArcGIS \(.lyr\)](#) [Add To Map](#) [Details](#)
[Metadata XML](#) [Zoom To](#)

NC Parcel Boundaries and Standard Fields - ArcGIS Feature Service

NC Parcel Boundaries and Standard Fields - Download

NC OneMap GeoSpa x NC1Map_Parcels (Ma x

services.nconemap.gov/arcgis/rest/services/NC1Map_Parcels/MapServer

ArcGIS REST Services Directory

[Home](#) > [services](#) > [NC1Map_Parcels \(MapServer\)](#)

[JSON](#) | [SOAP](#) | [WMS](#) | [WFS](#)

NC1Map_Parcels (MapServer)

View In: [ArcGIS JavaScript](#) [ArcGIS.com Map](#) [Google Earth](#) [ArcMap](#) [ArcGIS Explorer](#)

View Footprint In: [ArcGIS.com Map](#)

Service Description: This digital geospatial dataset represents parcel boundaries with stand: and the Eastern Band of Cherokee Indians. The Integrated Cadastral Data Exchange project tr consistent attributes. The source geometry is retained as published by individual county data acreage, and assessed value. Parcels are represented as both polygons (parcel boundaries) a

Map Name: Layers

[Legend](#)

[All Layers and Tables](#)

Layers:

- [County Boundaries](#) (0)
- [Parcel Centroids](#) (1)
- [Parcels](#) (2)
- [Counties Contributing Parcel Data](#) (3)

Description:

Copyright Text: Participating NC Counties, NCCGIA, NC OneMap, US EPA

Spatial Reference: 102719 (2264)

NC OneMap GeoSpa x NC1Map_Parce

services.nconemap.gov/arcgi

ArcGIS REST Services Directory


[Home](#) > [services](#) > [NC1Map_Parcels \(Map](#)

[JSON](#) | [SOAP](#) | [WMS](#) | [WFS](#)

NC1Map_Parcels (MapServe

View In: [ArcGIS JavaScript](#) [ArcGIS.co](#)

View Footprint In: [ArcGIS.com Map](#)



This XML file does not appear to have any style information associated with it. The document tree is shown below.

```
<WMS_Capabilities xmlns="http://www.opengis.net/wms" xmlns:xsi="http://www.w3.org/2001/XMLSchema-instance" xmlns:esri_wms="http://www.esri.com/wms" version="1.3.0"
xsi:schemaLocation="http://www.opengis.net/wms http://schemas.opengis.net/wms/1.3.0/capabilities_1_3_0.xsd http://www.esri.com/wms
http://services.nconemap.gov/arcgis/services/NC1Map_Parcels/MapServer/WmsServer?version=1.3.0%26service=WMS%26request=GetSchemaExtension">
  <Service>
    <Name>
      <![CDATA[ NC1Map Statewide Parcels ]]>
    </Name>
    <Title>
      <![CDATA[ NC1Map_Parcels ]]>
    </Title>
    <Abstract>
      <![CDATA[
        This digital geospatial dataset represents parcel boundaries with standard core attributes for a collection of parcel data from North Carolina county data producers and the
        Cherokee Indians. The Integrated Cadastral Data Exchange project transforms source datasets from county data producers to create a standardized dataset with consistent attr
        geometry is retained as published by individual county data producers. This dataset includes a core set of cadastral attributes including ownership, acreage, and assessed v
        represented as both polygons (parcel boundaries) and points (geometric center) representing each property.
      ]]>
    </Abstract>
    <KeywordList>
      <Keyword>
        <![CDATA[
          parcels, cadastral, cadastre, land, tax, ownership, value, deed, property, estate, tract, plat, plot
        ]]>
      </Keyword>
    </KeywordList>
    <OnlineResource xmlns:xlink="http://www.w3.org/1999/xlink" xlink:type="simple" xlink:href="http://services.nconemap.gov/arcgis/services/NC1Map_Parcels/MapServer/WmsServer?"/>
    <ContactInformation>
      <ContactPersonPrimary>
        <ContactPerson>
          <![CDATA[ Brett Spivey ]]>
        </ContactPerson>
        <ContactOrganization>
          <![CDATA[ NC Center for Geographic Informatino and Analysis ]]>
        </ContactOrganization>
      </ContactPersonPrimary>
    </ContactInformation>
  </Service>
</WMS_Capabilities>
```



OnlineResource... Xlink:href="
http://services.nconemap.gov/arcgis/services/NC1Map_Parcels/MapServer/WmsServer?



GeoSpatial Portal

[HOME](#)

[SEARCH](#)

[BROWSE](#)

[DOWNLOAD IMAGERY](#)

[MAP VIEWER](#)

Home

Find Resource...

parcels standard

Search

Tutorial Videos

WMS

NC OneMap Imagery (<http://services.nconemap.com/arcgis/services/Imagery>)

Add Data to Map

Available sources in this connection. Select Items to add to the map as

Schema	Image Format	Server CS Cod
WMS_Schema		
<input type="checkbox"/> Orthoimagery_Latest	png	EPSG:4326

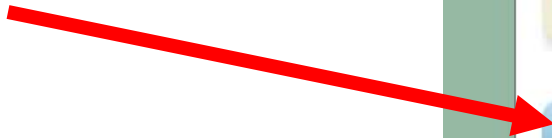
Use WMS Services in AutoCAD

Most Recently Added/Updated Resources...

Expand results

- [Brownfields Agreement Sites](#)
- [Shellfish Growing Area Classifications](#)
- [Natural Heritage Program Natural Areas \(January 2015\)](#)
- [Natural Heritage Element Occurrences \(January 2015\)](#)
- [Managed Areas in North Carolina \(January 2015\)](#)

API: [GEORSS](#) [ATOM](#) [HTML](#) [FRAGMENT](#) [KML](#) [JSON](#) [CSV](#)



NC OneMap Tutorial Videos

1. Overview – searching for data and web services
2. What's new in the Geospatial Portal
3. How to use Esri based web services
4. How to use Open Geospatial Consortium (OGC) services
5. Search the Portal directly from the browser
6. How to download imagery
7. Use WMS services in Microstation
8. Use WMS services in AutoCAD
9. Use NC OneMap services with Carlson

AutoCad

https://www.youtube.com/watch?v=tYyXxePYL_A&feature=youtu.be

A Vicinity Map Using Services



GeoSpatial Portal

[Help](#) [About](#) [NC O](#)

[HOME](#) [SEARCH](#) [BROWSE](#) [DOWNLOAD IMAGERY](#) [LAUNCH MAP V](#)

rch

roads

Search

Results 1-10 of 30 record(s)

[1](#) [2](#) [3](#) [>](#) [Last](#)

Expand Results

[Zoom To Results](#) [Zoom To Search](#)

Records shown from: This Site
[Click here to select different site\(s\) or configure search.](#)

[Advanced Search Options](#) [Clear](#)

Intersecting Fully within

Date: (yyyy-mm-dd)

Date: (yyyy-mm-dd)



- [NCDOT Unpaved Roads](#)
- [NCDOT State Maintained Roads](#)
- [NCDOT Roads Designated for Light-Weighted Vehicle](#)
- [North Carolina Wall Map \(PDF format\)](#)
- [Primary and Secondary Routes, 1st Quarter 2015 - NC Department of Transportation](#)

Search

Results 1-10 of 30 record(s)

1 2 3 >

Expand Results

[Zoom To R](#)

his Site
or configure search.

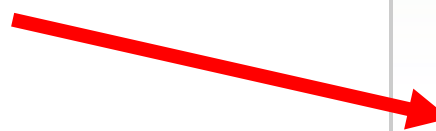
  [NCDOT Unpaved Roads](#)

  [NCDOT State Maintained Road](#)

[Download/Open](#) [Preview](#) [Globe \(.km](#)

[ArcGIS \(.lyr\)](#) [Add To Map](#) [Details](#) [Me](#)

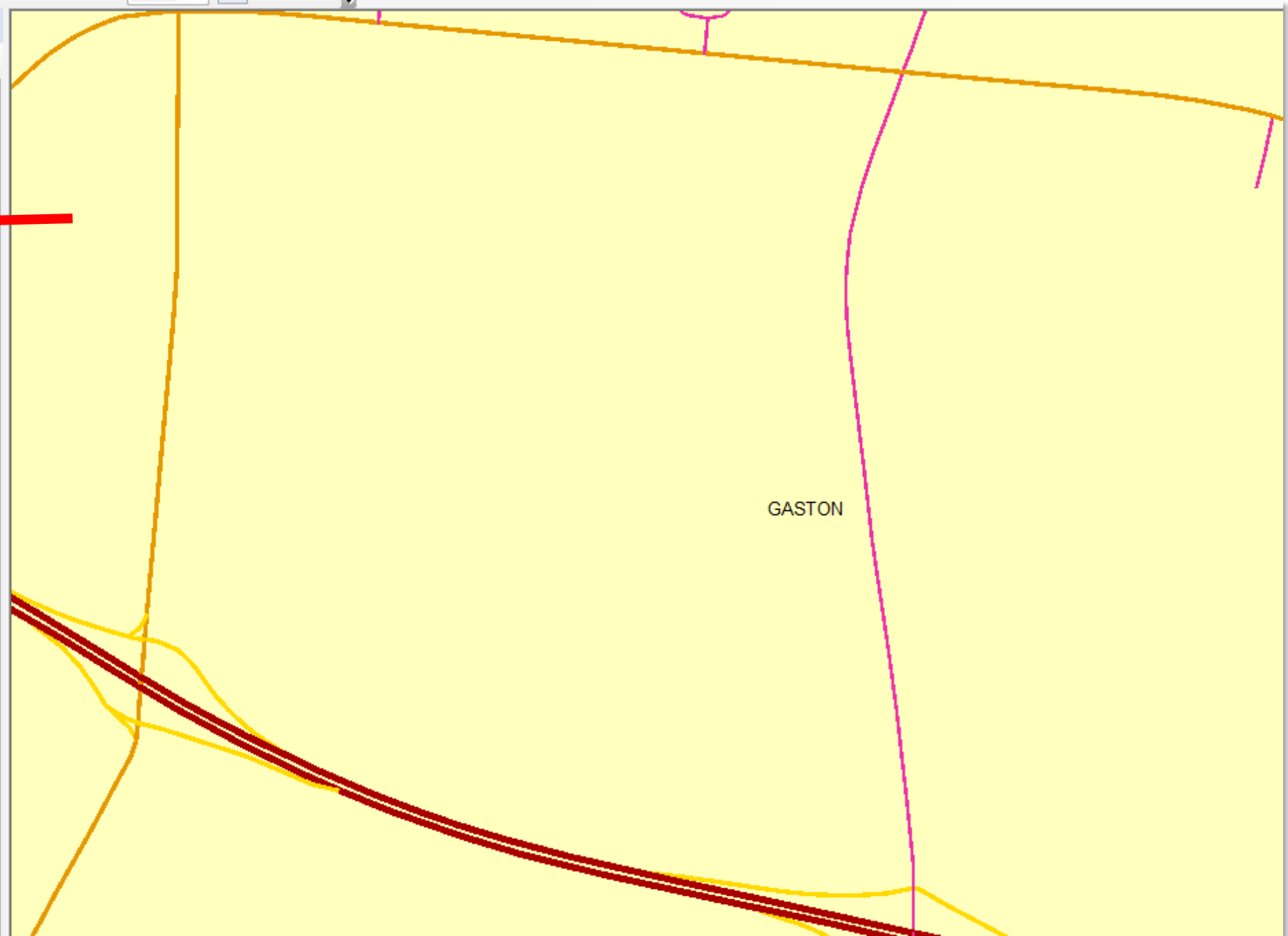
  [NCDOT Roads Designated for](#)



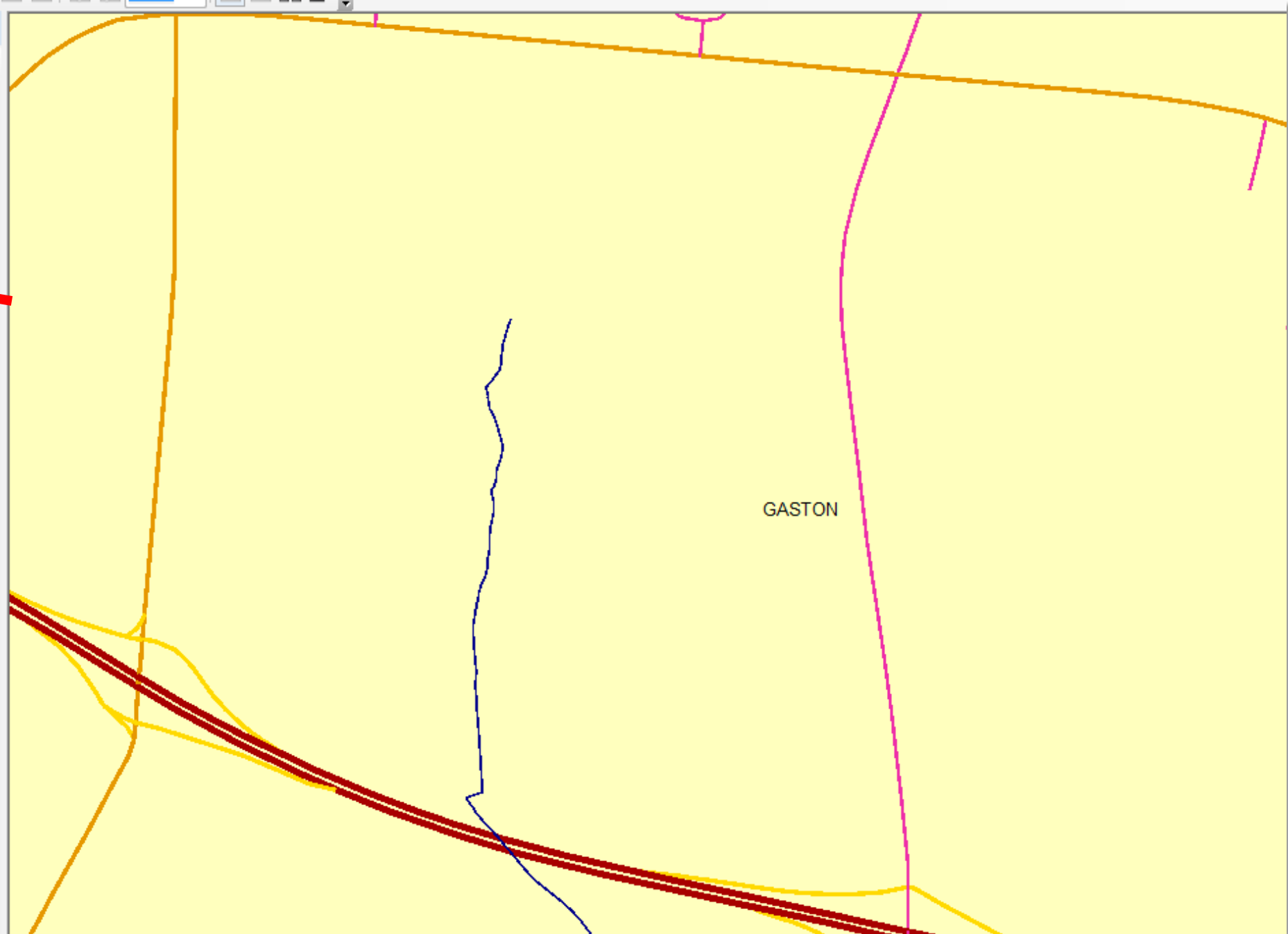
(www-mm-dd)

Table Of Contents

- Streams/Rivers (Western NC Hi-Res)
- Water Areas (Western NC Hi-Res)
- Waterbodies (Western NC Hi-Res)
- NCDOT_StateMaintainedRoads** ←
- State Maintained Roads
 - Interstate
 - US Route
 - NC Route
 - Secondary Road
 - Ramp
 - Rest Area
 - State Parks
- State Maintained Roads - Primary Routes
- State Maintained Roads - Interstates
- NC1Map_Parcels
- NC1Map_Parcels
 - Parcel Centroids
 - Parcels
- NCDOT_CityBdy_Poly
 - Municipal Boundary
- Imagery\Orthoimagery_Latest
- Imagery\Orthoimagery_All
- CountyBoundary
- CountyBoundary



- County Boundary Polygon
- NC1Map_Hydrography
 - Wild and Scenic Rivers
 - Major Hydrography (Streams/Rivers)
 - Water Quality Classifications
 - Major Hydrography (Waterbodies)
 - Streams/Rivers (Western NC Hi-Res)
 - Water Areas (Western NC Hi-Res)
 - Waterbodies (Western NC Hi-Res)
- NCDOT_StateMaintainedRoads
 - State Maintained Roads
 - Interstate
 - US Route
 - NC Route
 - Secondary Road
 - Ramp
 - Rest Area
 - State Parks
 - State Maintained Roads - Primary Roads
 - State Maintained Roads - Interstates
- NC1Map_Parcels
 - Parcel Centroids
 - Parcels





GO! NC is the North Carolina Department of Transportation's (NCDOT) portal through which NCDOT staff, business partners, and others can access and publish geospatial information pertaining to transportation in North Carolina.

Discover

[Maps & Apps](#)

[Geospatial Services](#)

[Downloads](#)

[Documents](#)



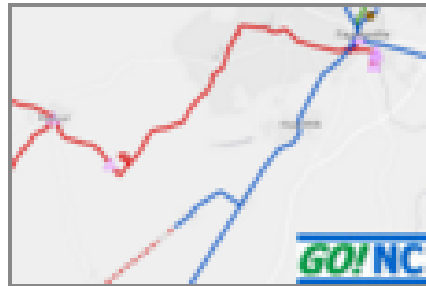
[Open](#) ▾ [Details](#)

NCDOT County boundaries Outlined

 Map Image Layer by NCDOT.GOV

Last Modified: February 16, 2016

★ ★ ★ ★ ★ (0 ratings, 0 comments, 338 views)



[Open](#) ▾ [Details](#)

NCDOT North Carolina Rail System

NCDOT North Carolina Rail System - Rail Lines, Facilities, and Crossings

 Map Image Layer by NCDOT.GOV

Last Modified: February 16, 2016

★ ★ ★ ★ ★ (0 ratings, 0 comments, 8,068 views)



[Open](#) ▾ [Details](#)

NCDOT North Carolina Railroads

North Carolina rail lines provided by the NCDOT Rail Division.

 Map Image Layer by NCDOT.GOV

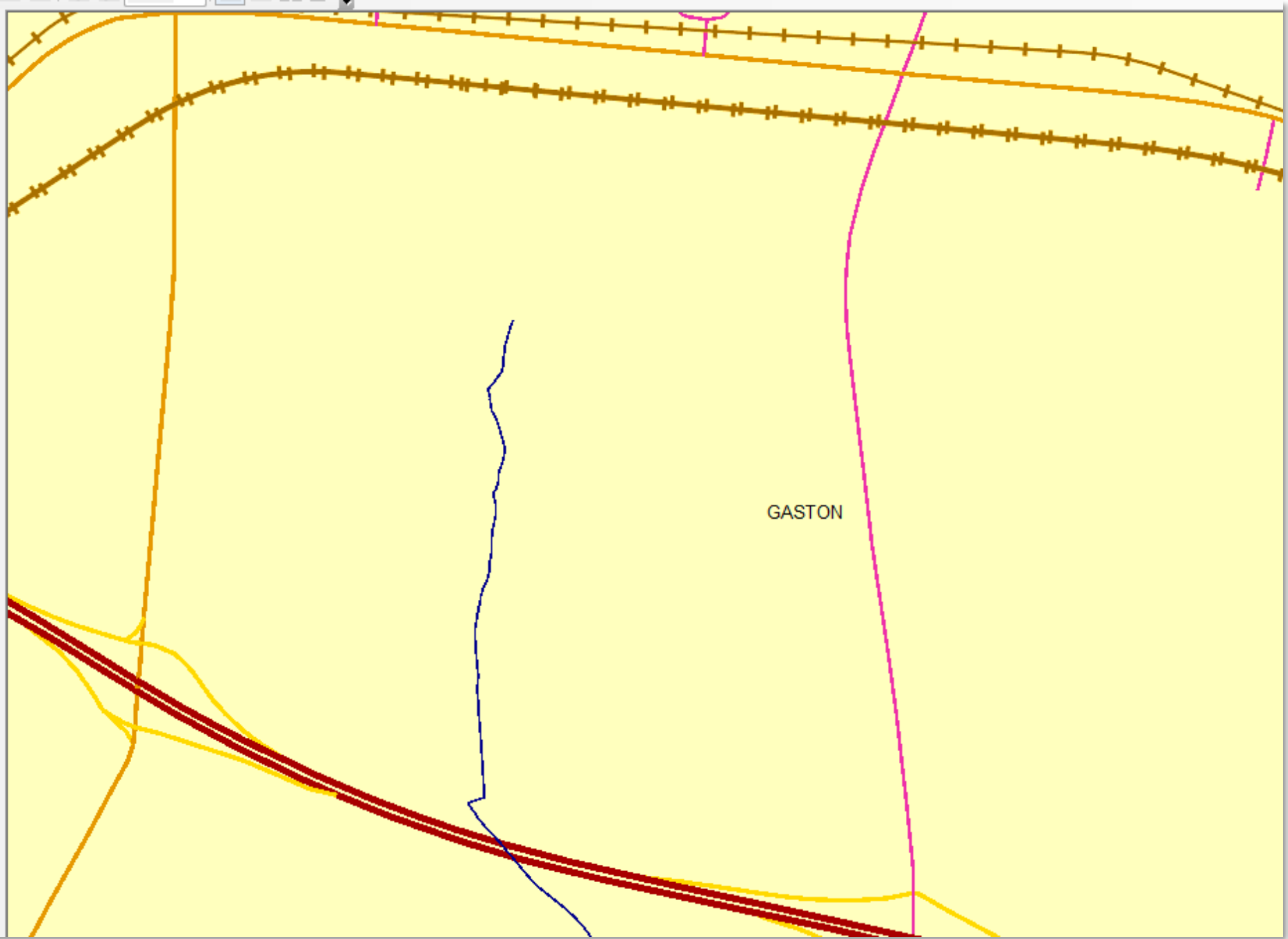
Last Modified: February 16, 2016


★ ★ ★ ★ ★ (0 ratings, 0 comments, 695 views)



Layers

- NCDOT_RailRoads**
 - Railroads
- NCDOT_CountyBdy_Poly
 - County Boundary Polygon
- NC1Map_Hydrography
 - Wild and Scenic Rivers
 - Major Hydrography (Streams/Rivers)
 - Water Quality Classifications
 - Major Hydrography (Waterbodies)
 - Streams/Rivers (Western NC Hi-Res)
 - Water Areas (Western NC Hi-Res)
 - Waterbodies (Western NC Hi-Res)
- NCDOT_StateMaintainedRoads
 - State Maintained Roads
 - Interstate
 - US Route
 - NC Route
 - Secondary Road
 - Ramp
 - Rest Area
 - State Parks
 - State Maintained Roads - Primary Ro



- Streams/Rivers (Western NC Hi-Res)
- Water Areas (Western NC Hi-Res)
- Waterbodies (Western NC Hi-Res)
- NCDOT_StateMaintainedRoads
 - State Maintained Roads
 - Interstate
 - US Route
 - NC Route
 - Secondary Road
 - Ramp
 - Rest Area
 - State Parks
 - State Maintained Roads - Primary Routes
 - State Maintained Roads - Interstates
- NC1Map_Parcels
- NC1Map_Parcels 
- Parcel Centroids
- Parcels
 -
- NCDOT_CityBdy_Poly
 - Municipal Boundary
 -
- Imagery\Orthoimagery_Latest
- Imagery\Orthoimagery_All
- CountyBoundary
- CountyBoundary

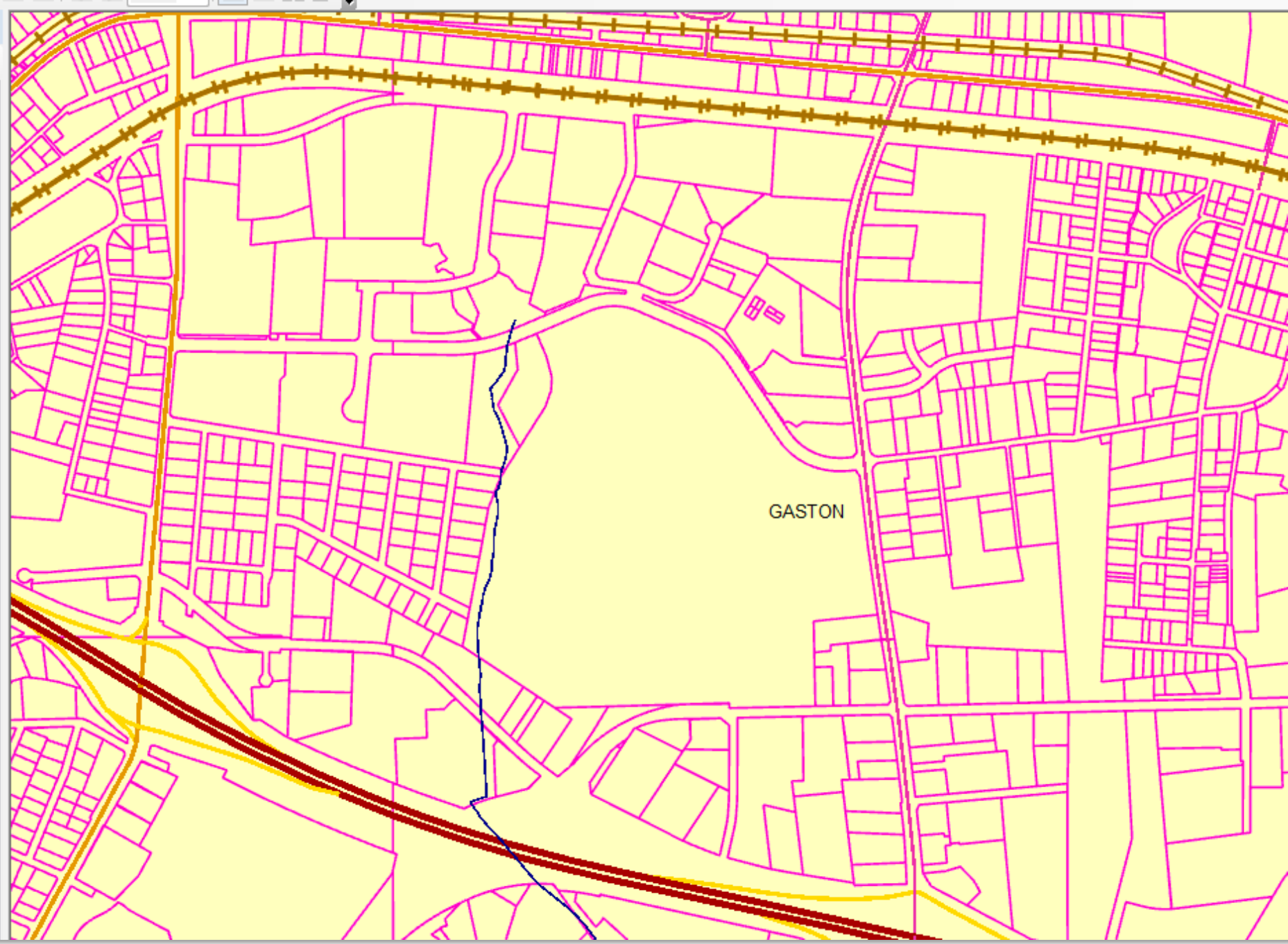
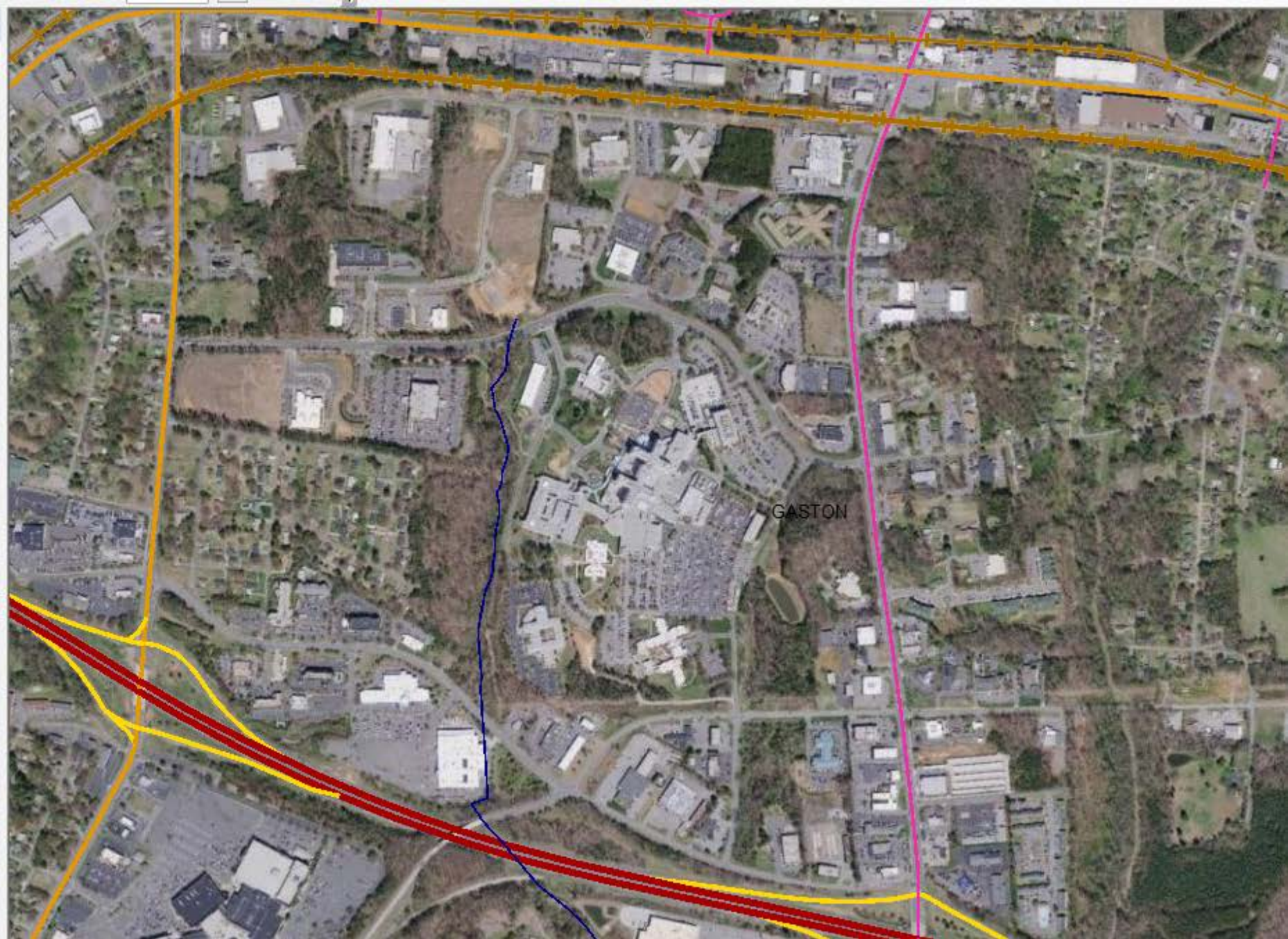


Table Of Contents

- Streams/Rivers (Western NC Hi-Res)
- Water Areas (Western NC Hi-Res)
- Waterbodies (Western NC Hi-Res)
- NCDOT_StateMaintainedRoads**
 - State Maintained Roads
 - Interstate
 - US Route
 - NC Route
 - Secondary Road
 - Ramp
 - Rest Area
 - State Parks
 - State Maintained Roads - Primary Road
 - State Maintained Roads - Interstates
- NC1Map_Parcels
- NC1Map_Parcels
 - Parcel Centroids
 - Parcels
- NCDOT_CityBdy_Poly
 - Municipal Boundary
- Imagery\Orthoimagery_Latest
- Imagery\Orthoimagery_All
- CountyBoundary
- CountyBoundary



Useful Links

<http://data.nconemap.gov>

- Tutorial videos
- Auto-notification of new data

<http://nconemap.gov>

- Latest news/developments with our blog
- General program information

<https://services.nconemap.gov>

- Links to services hosted by CGIA
- FAQ / Best practices for GIS web services

<http://ncgicc.org>

- Information about the NC Geographic Coordinating Council
 - statewide initiatives, standards, contacts



Contact NC OneMap



Brett Spivey

NC OneMap Programmer

brett.spivey@nc.gov

919-754-6591

David Giordano

NC OneMap Database Administrator

david.giordano@nc.gov

919-754-6585