

# Exploring the Assets of Archives & Records

---

PRESENTED BY:  
GOVERNMENT RECORDS SECTION  
STATE ARCHIVES OF NORTH CAROLINA



*State Archives of North Carolina*  
NATURAL AND CULTURAL RESOURCES

# Objectives

---

- What land records are at the State Archives?
  - ✓ State Agency Records
  - ✓ County Records
  - ✓ Special Collections
  - ✓ Digital Collections
- How do I search for these records?
- How do I get copies?

# ✓ State Agency Records

---

- Treasurer and Comptroller
- General Assembly
- State Board of Education
- Secretary of State

# Secretary of State Records

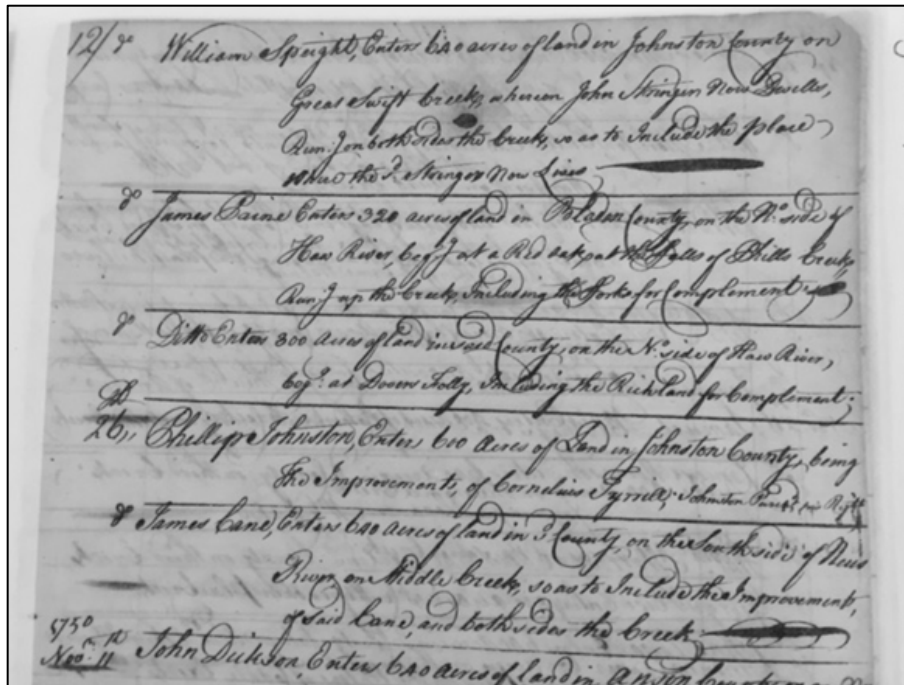
---

## Land Grants

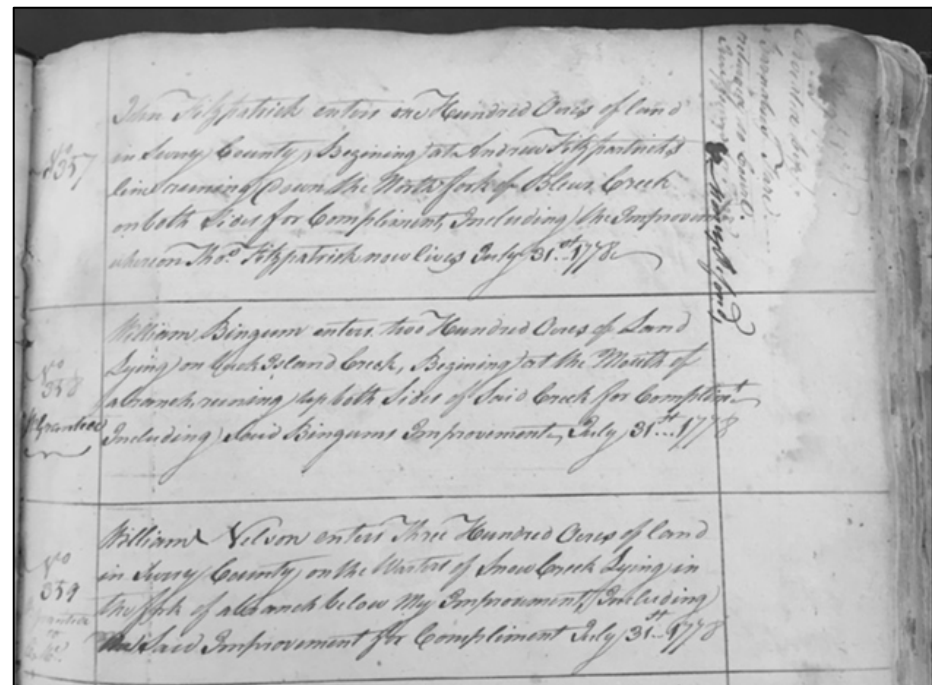
- Entry
- Warrant
- Survey/Plat
- Patent/Deed

# Entries

Granville District  
Entry Book, c. 1750

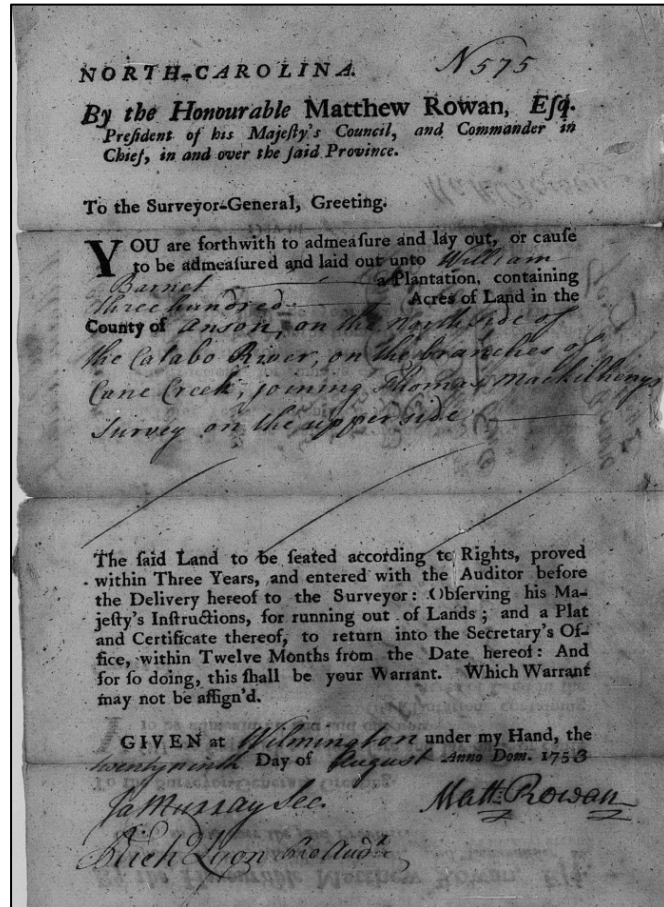


Surry County  
Entry Book, 1778

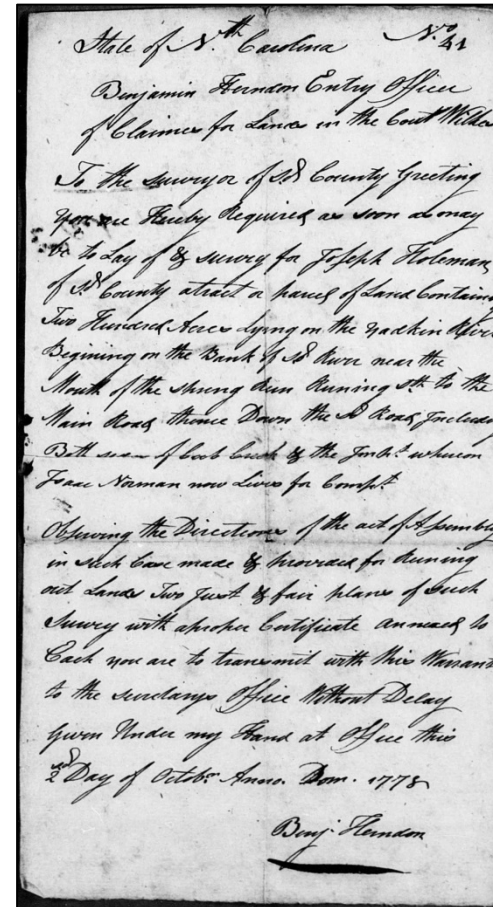


# Warrants

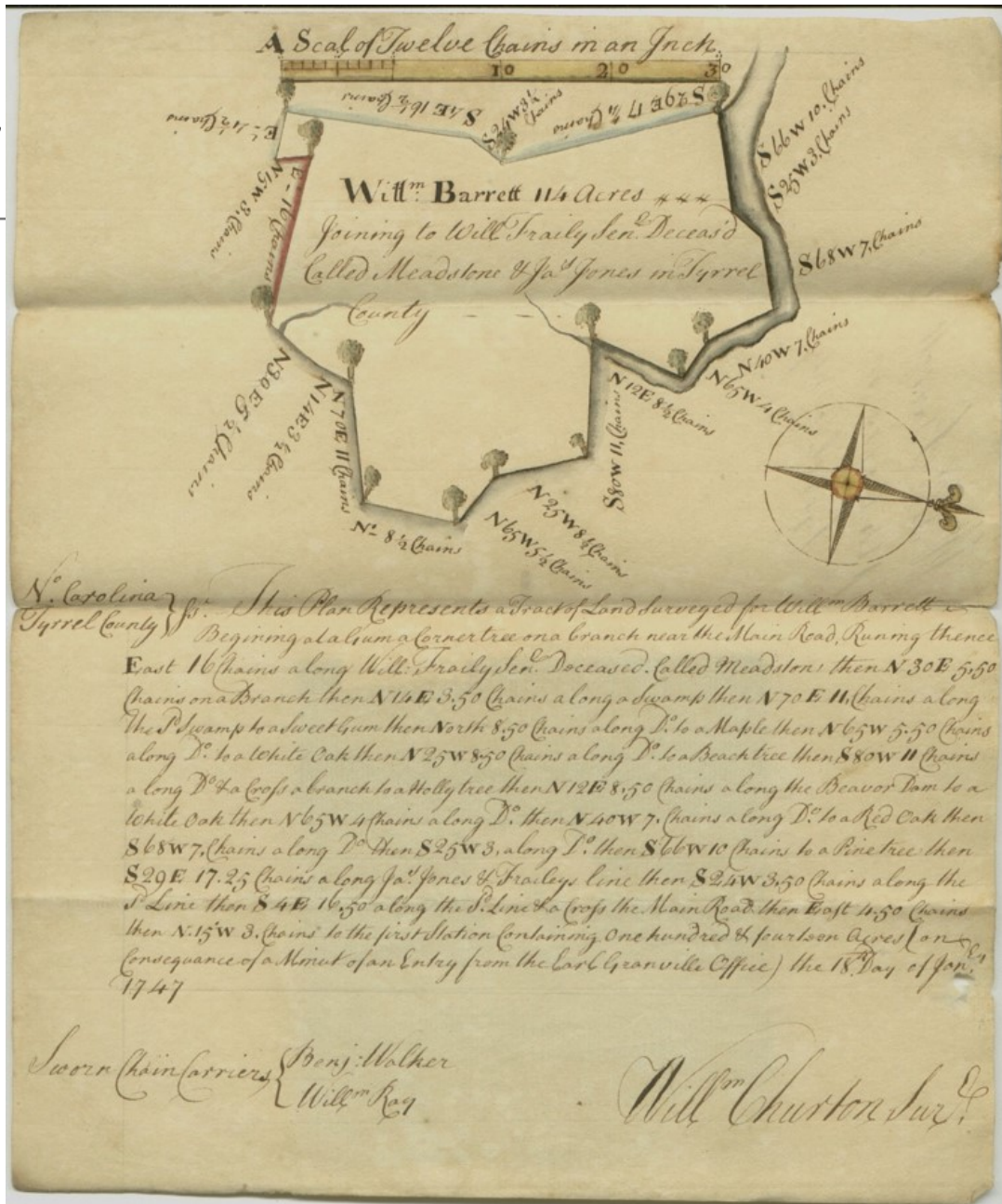
Crown Warrant, 1753



State Warrant, 1778

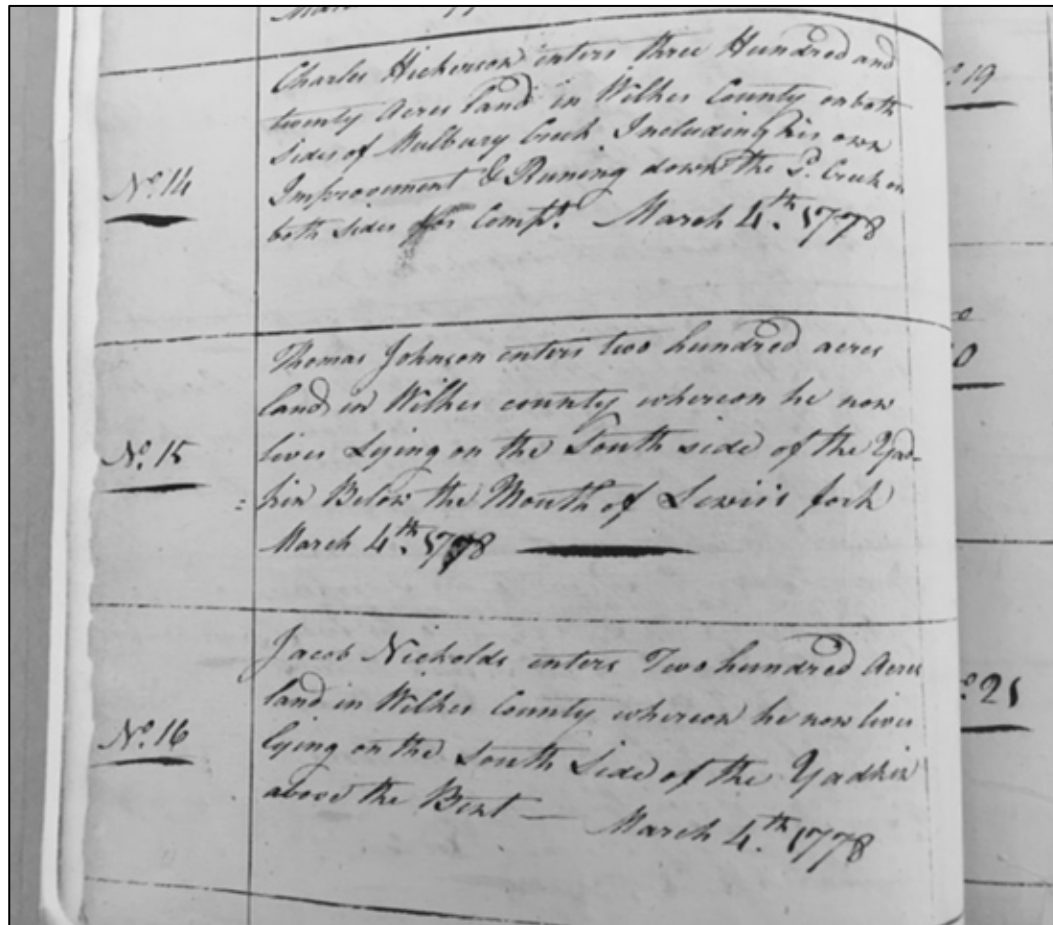


# Surv



# Record of Patent/Deed

---



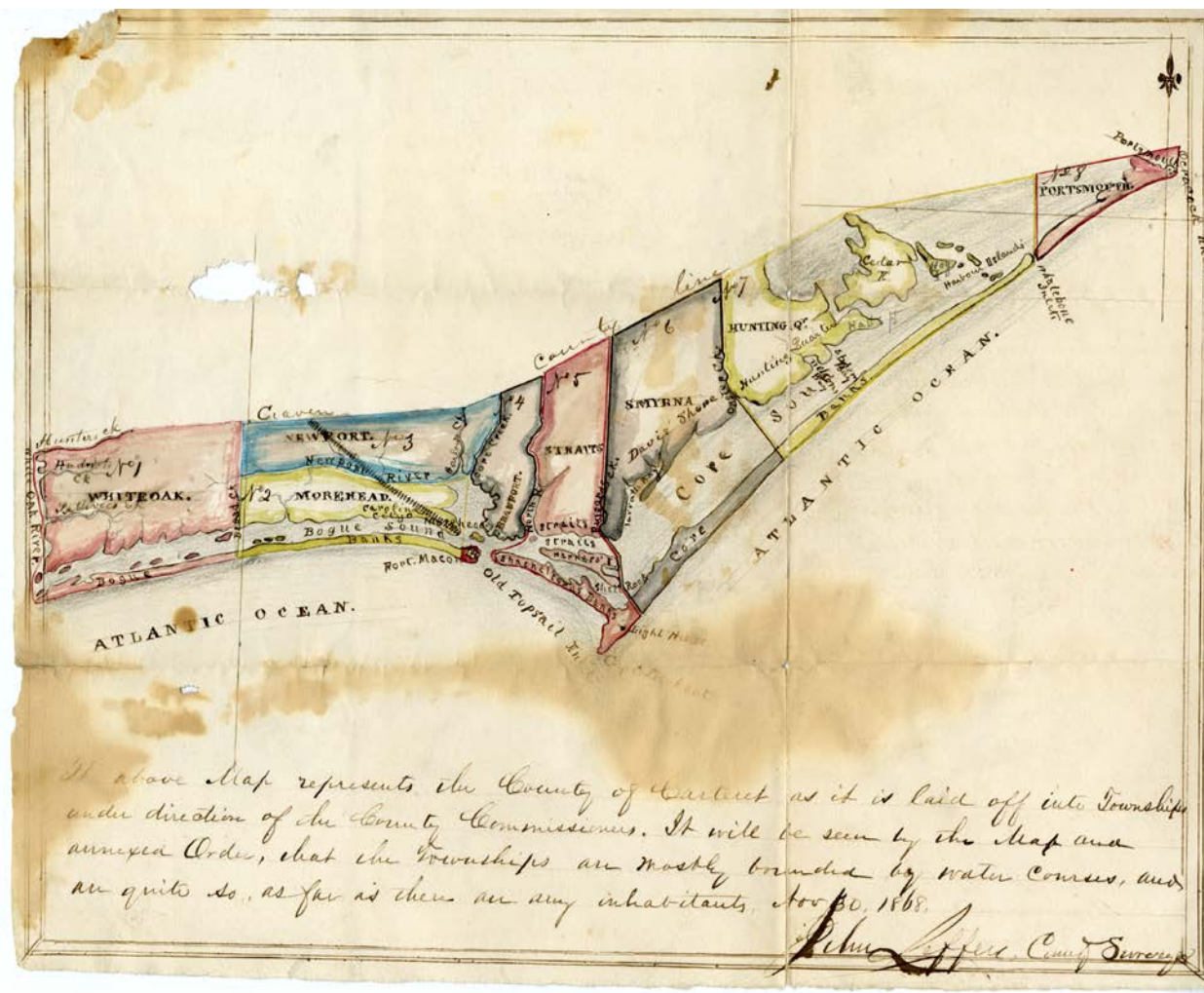


# Other Secretary of State Records

---

- Glasgow Land Fraud Records, 1798-1800
- Cherokee Ceded Land Survey Books, 1820  
1827, 1837
- Oyster Bed Surveys, 1886-1888
- Register of Military Land Warrants, 1783-1841

# boundary papers, 1749-1841



The above Map represents the County of Currituck as it is laid off into Townships under direction of the County Commissioners. It will be seen by the Map and annexed Order, that the Townships are mostly bounded by water Courses, and are quite so, as far as there are any inhabitants, Nov 30, 1808.

John Lippert, County Surveyor

# boundary papers, 1749-1841



# ✓ County Records

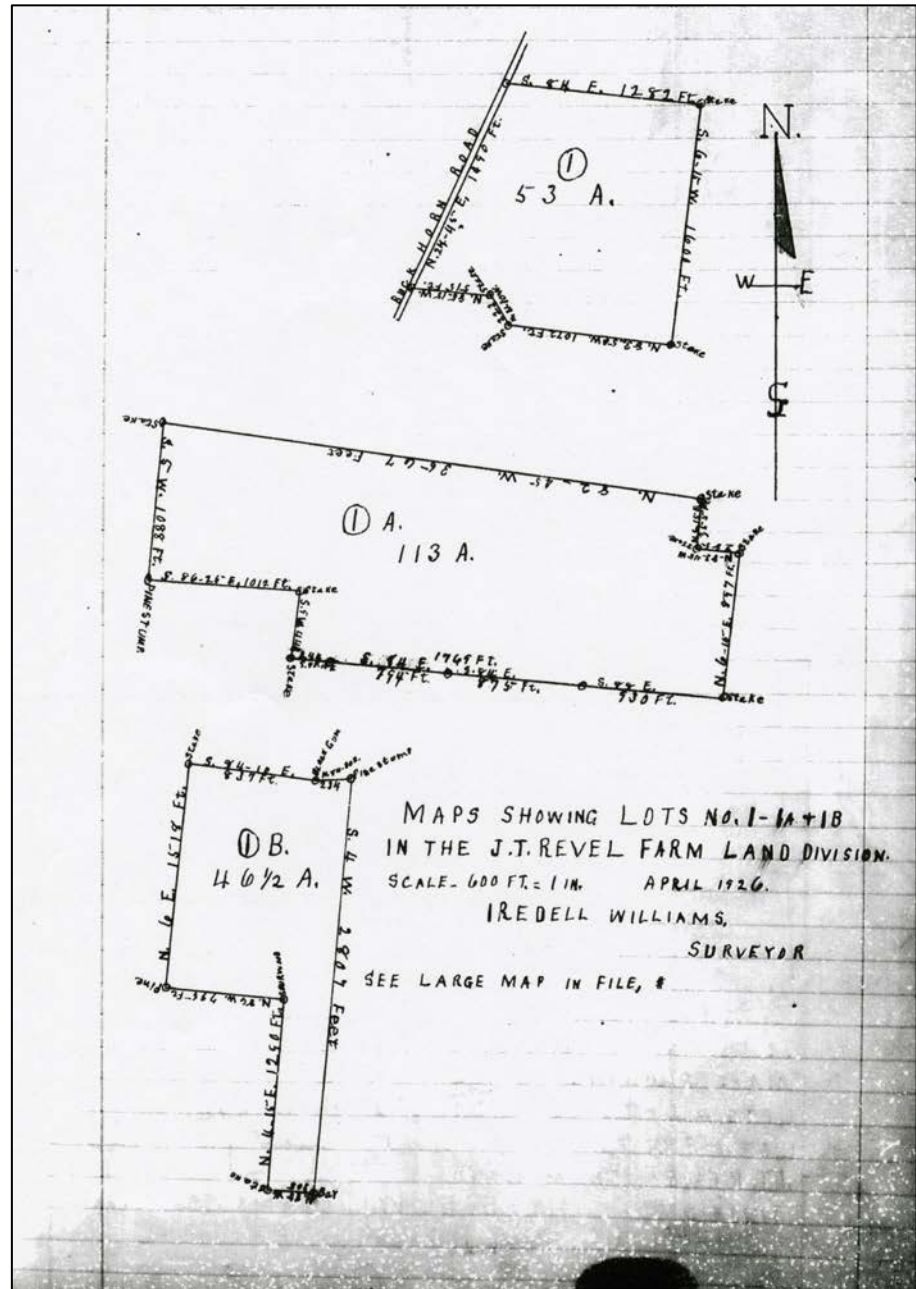
---

- Record of Deeds
- Court Records
- Tax Records

# COUNTY RECORDS: record of deeds



# COUNTY RECORDS: court records



# Court Records

---

- Land Entries
- Inheritance of Land
- Land Disputes
- Sale of Land

# COUNTY RECORDS: tax records

*OTPA List of Taxables for the Year 1770*

| Masters, Mistres's<br>of Family's and Over-<br>seers of Plantations | White Taxables | No | Males<br>Slaves | No | Female<br>Slaves | No | Baniaga | Threl | Total |
|---|----------------|----|-----------------|----|------------------|----|---------|-------|-------|
|   |                |    |                 |    |                  |    | 2       |       | 212   |
| Thomas Thomas   | Thomas Thomas  | 1  |                 |    |                  |    |         |       | 1     |
| Bunch Paul  | Paul Bunch     | 1  |                 |    |                  |    |         |       | 1     |
| Bunch Shadrach  | Shadrach Bunch | 1  | Cam             | 1  |                  |    |         |       | 2     |

*OTPA List of Taxables for the Year 1770*

| Masters, Mistres's<br>of Family's and Over-<br>seers of Plantations | White Taxables                | No | Males<br>Slaves  | No | Female<br>Slaves  | No | Baniaga | Threl | Total |
|---|-------------------------------|----|--|----|---|----|---------|-------|-------|
|   |                               |    |  |    |   |    | 2       |       | 212   |
| Thomas Thomas   | Thomas Thomas                 | 1  |  |    |   |    |         |       | 1     |
| Bunch Paul  | Paul Bunch                    | 1  |  |    |   |    |         |       | 1     |
| Bunch Shadrach  | Shadrach Bunch                | 1  | Cam  | 1  |   |    |         |       | 2     |
| Boyd William  | William Boyd<br>Josiah Pettit | 2  | Ned<br>Townsie<br>Serr<br>Jack<br>Jack<br>Gato<br>Dick<br>Sam<br>Pher<br>Dick<br>Frank | 11 | Bagar<br>Jude<br>Jude<br>Jenny<br>Grace<br>Jenny<br>Phoe<br>Cambilo<br>Noll<br>Sue<br>Silva | 11 |         |       | 24    |
| Bryant Bryan  | Bryant Bryan                  |    |  |    |   |    |         |       |       |

|                       |  |  |                                     |  |  |  |  |  |       |
|-----------------------|--|--|-------------------------------------|--|--|--|--|--|-------|
|                       |  |  | London<br>Dublin<br>York<br>Bristol |  |  |  |  |  |       |
| W. Lanchard Elizabeth |  |  | Tom                                 |  |  |  |  |  | 6-274 |



# ✓ Special Collections

---

- Boundary Line Papers, 1789-1971
- Compass Notes & Surveyor's Books, 1850-1868
- Eric Norden, 1869-1946

# ✓ Digital Collections

---

- North Carolina Maps:

<http://www2.lib.unc.edu/dc/ncmaps/?CISOROOT=/ncmaps>

- GIS Data:

<http://digital.ncdcr.gov/cdm/home/collections/gis-data>

- NCOneMap:

<http://www.nconemap.com/>

Browse ▾

K-12

Interactive

Sanborn Maps

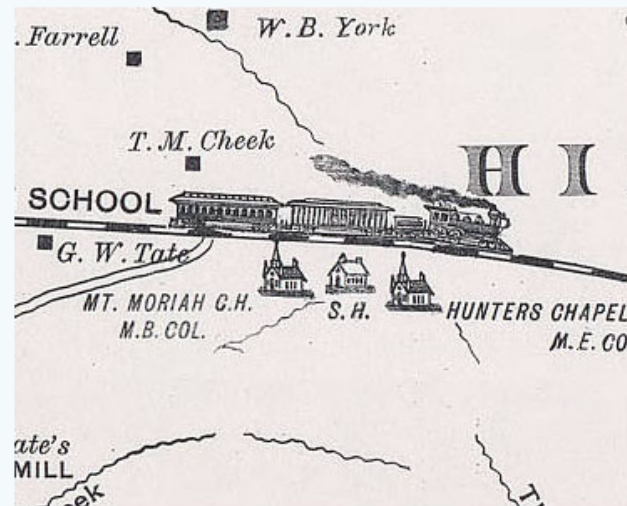
Learn More

About this Project ▾

## North Carolina Maps

North Carolina Maps is a comprehensive, online collection of historic maps of the Tar Heel State. Featuring maps from three of the state's largest map collections -- the [North Carolina State Archives](#), the [North Carolina Collection at UNC-Chapel Hill](#), and the [Outer Banks History Center](#) -- North Carolina Maps provides an unprecedented level of access to these materials. North Carolina Maps contains more than 3,000 maps, ranging in date from the late 1500s to 2000, and including detailed maps for each of North Carolina's one hundred counties.

North Carolina Maps is made possible by the Institute of Museum and Library Services under the provisions of the Library Services and Technology Act as administered by the [State Library of North Carolina](#).



Detail from "Map of Orange County, N.C." George W. Tate. 1890.

1 2 3 4 5 6



NORTH CAROLINA  
DEPARTMENT OF  
CULTURAL  
RESOURCES  
www.ncculture.com



UNC  
UNIVERSITY LIBRARIES



North Carolina State Archives  
North Carolina Collection  
Outer Banks History Center  
CDLA / DocSouth


Help  
Permissions  
Contact  
Home



1/16/2016 10:00 AM



▼ Description

|                      |  |
|----------------------|--|
| Rating               | ☆☆☆☆☆ Based on 0 rating(s)   |
| Repository           | <a href="#">North Carolina State Archives</a>   |
| Title                | A plan of Mclenburg and portions of joining counties as laid down by a scale of five miles to an inch  |
| Alternative Title    | A plan of Mecklenburg and portions of joining counties as laid down by a scale of five miles to an inch  |
| Date Published       | 1789   |
| Date Depicted        | 1789   |
| Creator - Individual | Graham, Joseph, 1759-1836.   |
| Abstract             | Manuscript map shows landowners, churches, iron works, "Indian Towns" mills, ferries. Map drawn by Major Joseph Graham, (1759-1836), January 16th, 1789.   |
| Map Type             | Property   |
| Details              | <a href="#">County Boundaries</a><br><a href="#">Creeks and Streams</a><br><a href="#">Landowners</a><br><a href="#">Mills</a><br><a href="#">Native American Settlements</a><br><a href="#">Businesses</a><br><a href="#">Places of Worship</a> |
| Subject - Geographic | <a href="#">Mecklenburg County (N.C.)--Maps.</a>   |
| Subject - Topical    | <a href="#">Indians of North America--North Carolina--Mecklenburg County--Maps--Early works to 1800.</a>   |
| Places Depicted      | <a href="#">Mecklenburg County (N.C.)</a>  |
| West Longitude       | -81.3  |
| East Longitude       | -81.25   |
| North Latitude       | 35.616667  |
| South Latitude       | 34.5   |
| Scale                | 1:316,800  |
| Size                 | 31 x 39 cm.  |

## GIS Data



Image: from pamphlet "Preserving America's Geospatial Footprints" of the Geospatial Multistate Archive and Preservation Partnership (GeoMAPP) project

Go

### Popular subjects

- Geographic information systems -- North Carolina
- Biota
- Boundaries

Browse all items in this collection

## About this collection

The GIS Data Collection is a product of the Geospatial Multistate Archive and Preservation Partnership (GeoMAPP) project, which aims to address the preservation of "at risk" and temporally significant digital geospatial content.

This online collection currently consists of a subset of "demonstration" datasets or purposely identified datasets to capture as part of the demonstration portion of the project. As such, not all of these datasets are currently available online. The dataset categories include local and state government datasets, orthoimagery, centralized datasets (Framework and Non-Framework data), project files and digitized maps. The GIS Data collection spans the years 1947-2009, with the bulk of the items ranging from 1999-2009.

Additional datasets are available that are not currently listed in this online GIS Data Collection. For information on the location of these materials, please contact the Government Records Branch of the State Archives and consult the [GIS Data Collection online finding aid](#).

To view the attributes of a geospatial PDF, either Adobe Acrobat Reader 9 or higher (free download) or Adobe Acrobat 9 Pro (licensed product) can be used. Specialized software is required to view or manipulate shapefiles and MrSID images. To install a free GIS data viewing tool from ESRI, download ArcGIS Explorer on <http://www.esri.com>.

### Recently added to this collection:



Federal Land Ownership



County Boundaries



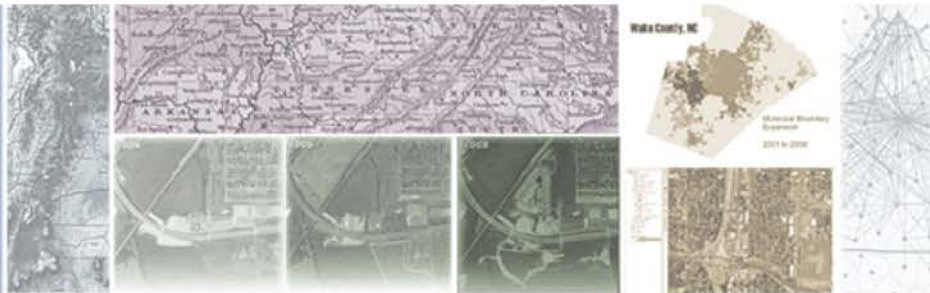
North Carolina Senate Districts



North Carolina House Districts



Fishing Designated Trout Waters



[Home](#) / [Partners](#) / [Informational Partners](#) / [Geoarchiving Glossary](#) / [Research Topics](#) / [Project Docs](#) / [Presentations](#) / [Publications & Tools](#) / [Other Resources](#) / [Contact Us](#)

- [Home](#)
- [Partners](#)
- [Informational Partners](#)
- [Geoarchiving Glossary](#)
- [Research Topics](#)
- [Project Documents](#)
- [Presentations](#)
- [Publications & Tools](#)
- [Other Resources](#)
- [Contact Us](#)

## About the Project

### Project Summary

The GeoMAPP effort aimed to address the preservation of "at risk" and temporally significant digital geospatial content. Geospatial data layers containing information about land parcels, zoning, roads, and jurisdictional boundaries change regularly. Existing copies of these data are often at risk of being overwritten when updates or changes are made and these superseded snapshots of data are then lost for future use and analysis.

In March 2010, the GeoMAPP team released an interim report detailing the project's accomplishments from 2007-2009. Access the report here: [GeoMAPP Interim Report: 2007-2009](#).

In December, 2011 the GeoMAPP grant and project concluded, and the GeoMAPP team released its final report summarizing the project's accomplishments from 2007-2011, specifically focusing on the second phase of the project from 2010-2011. Access the report here: [GeoMAPP Final Report: 2007-2011](#).

### Project Objectives

- Explore advanced methods to provide access to and ensure the long term preservation of archived geospatial content.
- Develop business planning tools and documentation to support the creation of materials to solicit or maintain sustainable funding for geoarchiving programs.
- Continue outreach to local, state, and federal geospatial data creators and national GIS and archives bodies and industry to highlight the issues of data preservation.
- Continue documenting best practices and lessons learned from technical explorations and outreach efforts.

### Project Partners

GeoMAPP was a partnership between the Library of Congress and state geospatial and archives staff from North Carolina, Kentucky, Montana, and Utah. For more information about the project partners, click on the [Partners](#) link to the left.

### Connect with GeoMAPP



### What's New

[GeoMAPP Final Report: 2007-2011](#)

[GeoMAPP Key Findings and Best Practices](#)

### New GeoMAPP White Papers

[Geoarchiving Business Planning Toolkit](#)

[Best Practices for Geospatial Data Transfer for Digital Preservation](#)

[BagIt and Esri ArcCatalog Demonstration Video \(WMV format\)](#)

[Best Practices for Archival Processing for Geospatial](#)

### GeoMAPP Quarterly Newsletter

Sign up for the [GeoMAPP quarterly newsletter](#).

View the [GeoMAPP Newsletter archives](#).

### GeoMAPP Brochure (2011)

Download the **new 2011** GeoMAPP brochure describing the importance and challenges for preserving geospatial content, and listing tools developed by the GeoMAPP team to address these challenges: [Preserving America's Geospatial Footprints](#)

# Other Online Resources

---

- [www.NClandgrants.com](http://www.NClandgrants.com)
- [www.FamilySearch.org](http://www.FamilySearch.org)
- [www.ancestry.com](http://www.ancestry.com)
- Register of Deeds websites

# Searching

---

- Online Catalog MARS (→ AXAEM):  
<http://mars.archives.ncdcr.gov/>
- Finding Aids on website:  
<http://archives.ncdcr.gov/Public/Finding-Aids/>
- County Records Guide on website (2002 edition):  
[http://archives.ncdcr.gov/Portals/3/PDF/guides/CO\\_GUIDE.PDF](http://archives.ncdcr.gov/Portals/3/PDF/guides/CO_GUIDE.PDF)
- Reference Staff  
[archives@ncdcr.gov](mailto:archives@ncdcr.gov)



# MARS

**MARS**  
MANUSCRIPT AND ARCHIVES REFERENCE SYSTEM  
NORTH CAROLINA STATE ARCHIVES  
*~ history for all the people ~*

[MARS Home](#)      [Help](#)      [Contact Us](#)      [Mobile Version](#)

### Basic Search

Search Text:

Class, Collection, Series:

Location of materials:  
 State Archives (Raleigh)  
 Outer Banks History Center (Manteo)  
 Western Regional Archives (Asheville)

- Basic Search
- Advanced Search
- Search by Call Number
- 25 Items per Page ▾
- Sort by Hierarchy ▾

<http://mars.archives.ncdcr.gov/>

State Archives of North Carolina      [Contact Us](#)      Department of Cultural Resources

# MARS

| MARS<br>Manuscript and Archives Reference System |       |  |           |                      |                             |              |                                 |  |  |  |
|--|-------|--|-----------|----------------------|-----------------------------|--------------|---------------------------------|--|--|--|
| <a href="#">Back To Search</a>                   |       |  |           |                      | <a href="#">Help</a>        |              | <a href="#">Generate Report</a> |  |  |  |
| MARS ID  | Class | Title  | Years     | Container Type       | Call No.                    | Child Count  |                                 |  |  |  |
| 3032   | AB    | Joseph and William Peace                         |           | 1784-1851, 1810-1852 | Record Group                | AB.132       | 0                               |  |  |  |
| 5377   | AB    | Mann-Arrington Gold Mining Company Account Books |           | 1887 - 1890          | Record Group                | AB.537.1-5   | 0                               |  |  |  |
| 4.1.11.36  | NT    | Petition of Daniel Rine re land                  |           | 1984, [ca.1678-1746] | Folder                      | N.84.1.40    | 0                               |  |  |  |
| 4.1.19.183                                       | NT    | Queen of Hearts, Playing Card                    |           | 1992                 | Folder                      | N.92.7.6     | 0                               |  |  |  |
| 4.1.19.184                                       | NT    | Queen of Spades                                  |           | 1992                 | Folder                      | N.92.7.7     | 0                               |  |  |  |
| 4.1.27.685                                       | NT    | Alexander Wilson, c. 1860s                       |           | 2000; [c. 1860s]     | Item                        | N.2000.6.100 | 0                               |  |  |  |
| 4.1.27.687                                       | NT    | Dr. Alexander Wilson, c. 1860s                   |           | 2000; [c. 1860s]     | Item                        | N.2000.6.102 | 0                               |  |  |  |
| 201.103  | CR    | Miscellaneous Records                            |           |                      | Series                      |              | 2                               |  |  |  |
| 201.103.1  | CR    | Miscellaneous Records                            |           | 1822-1939            | Item                        | CR.001.928.1 | 0                               |  |  |  |
| 201.109  | CR    | Orders and Decrees and Special Proceedings       |           |                      | Series                      |              | 5                               |  |  |  |
| 204.43   | CR    | Miscellaneous Land Records                       |           |                      | Series                      |              | 1                               |  |  |  |
| 204.43.1   | CR    | Miscellaneous Land Records                       | 1874-1908 | Box                  | CR.004.408.1                |              | 0                               |  |  |  |
| 204.103  | CR    | Miscellaneous Records                            |           |                      | Series                      |              | 1                               |  |  |  |
| 204.103.1  | CR    | Miscellaneous Records                            | 1848-1929 | Box                  | CR.004.928.1 - CR.004.928.2 |              | 0                               |  |  |  |
| 205.43   | CR    | Miscellaneous Land Records                       |           |                      | Series                      |              | 2                               |  |  |  |
| 205.43.1   | CR    | Miscellaneous Land Records                       | 1755-1909 | Item                 | CR.005.408.1                |              | 0                               |  |  |  |
| 205.62   | CR    | Miscellaneous Estates Records                    |           |                      | Series                      |              | 1                               |  |  |  |
| 205.73   | CR    | Miscellaneous Tax Records                        |           |                      | Series                      |              | 1                               |  |  |  |



# MARS

## Manuscript and Archives Reference System

[MARS Home](#)

[Search MARS](#)

[Help](#)

[Done](#)

[Clear](#)

[Select All](#)

- Mars
  - Popular Collections
  - Account Books
  - Academic Records
  - Bible Records
  - Cemetery Records
  - Church Records
  - County Records
    - Alamance County
    - Albemarle County
    - Alexander County
    - Alleghany County
    - Anson County
    - Ashe County
    - Avery County
    - Bath County
    - Beaufort County
    - Bertie County
    - Bladen County
    - Brunswick County
    - Buncombe County
    - Burke County
    - Bute County
    - Cabarrus County
    - Caldwell County
    - Camden County



[Version](#)

Search

Advanced Search

Call Number

Items per Page

Sort Hierarchy

State Archives



State Archives of North Carolina  
NATURAL AND CULTURAL RESOURCES

Provenance  
Click on item to view record.

- Mars
  - Halifax County
    - Miscellaneous Land Records

**Title** Miscellaneous Land Records  
**Years:** 1761-1917, no date  
**Creator:** Clerk of Superior Court; Clerk of Court of Pleas and Quarter Sessions; Register of Deeds  
**Languages:**  
**Call Number:** CR.047.408.2  
**Location:** 359 ( Archive Stacks)  
**MARS Id:** 247.43.2 (Box)  
**Other Ids:**

**Physical Description:**

**Quantity:** 1 Fibredex box(es)

**Other Copies:**

**Related Materials:**

**Arrangement:** Alphabetical

**Abstract:**

**Scope / Contents:** Documents include: Condemnation of land for public road, Peter Forbes vs. J. H. and B. F. Whitaker, 1870; correspondence concerning land, Pittman case (copy from 1856), Francis Macon to S. M. Gary, 1901, register of deeds to county surveyor, 1903; deeds, 1761, 1772, 1800, 1836, 1861 - 1862, 1896 - 1901, 1913; deposition (fragment) about military lands, names mentioned are John Gray Blount and Thomas, no date; ejectments, 1866, 1868; ejectments, summary proceedings in, 1874 - 1917; inquisition taken on the lands of Charles Pasteur, 1772; land boundary, Joshua Barker to Jesse Brewer (copy), 1787; plat (plot) of Cool (Cole) Brook of 690 acres, 1773; plat of Great Creek of 688 acres, 1773; plat, Willis Bowser et als, [ . . . ]

[View Full Scope / Contents](#)

**Subjects**

**Index Terms:**

- Boundaries
- Condemnation Proceedings
- Criminal Actions
- Deeds
- Ejectment
- Land Subdivision
- Roads
- Surveying

 Mars  
 Secretary of State Record Group  
 Click on item to view record.  Land Office: Land Warrants, Plats of Survey, and Related Records  
 Haywood County

Title File No. 591, William Shelton and John L. Smith

Years: 1842, 1846

Creator: Office of Secretary of State  
Office of the Secretary

Languages:

Call Number: S.108.730

Location: 97-102 ( Archive Stacks)

MARS Id: 12.14.71.591 (Folder)

Other Ids:

Physical Description:

Quantity: 3 Item(s)

Other Copies:

Related Materials:

Arrangement:

Abstract:

Scope / Contents:

**Personal Names**

Shelton, William

Smith, John L.

Index Terms:

**Geographical Names**

Hogback Fork

Tuckasegee River

Source / Donor:

Note:

Use Restrictions: Records may be reviewed on film. Original records may only be used by permission of the State Archivist.

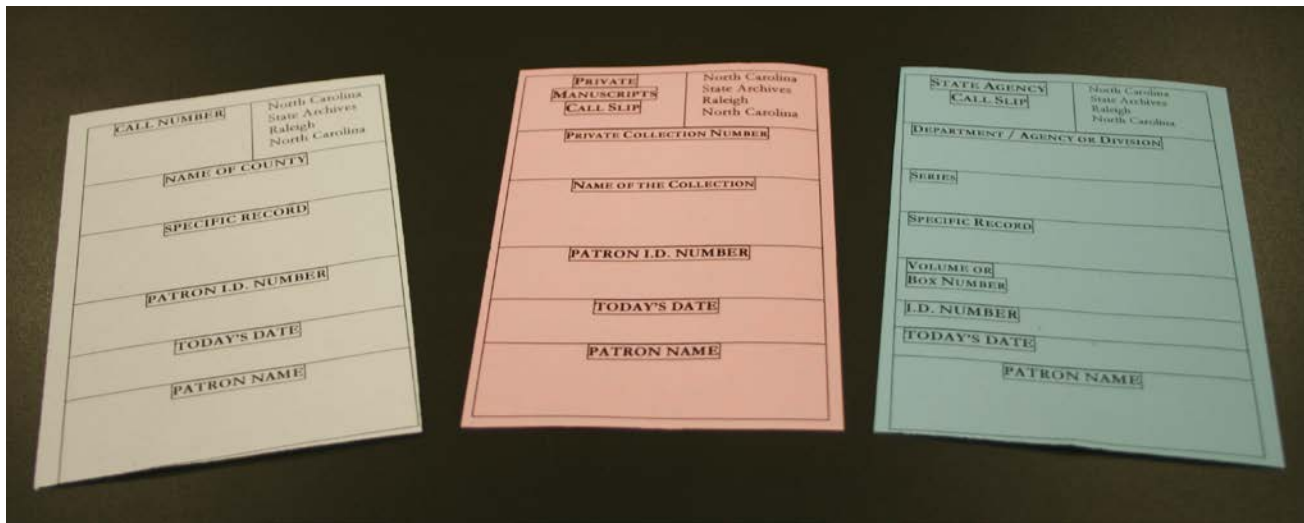
**Land Grant Information**

|             |   |           |     |
|-------------|---|-----------|-----|
| Acres:      | 100                                     |           |     |
| Grant No:   | 435                                     |           |     |
| Issued:     | Dec. 24, 1846                           |           |     |
| Surveyed:   |   |           |     |
| Warrant No: | 1545                                    | Entry No: |     |
| Entered:    | Nov. 5, 1842                            |           |     |
| Book No:    | 151                                     | Page No:  | 436 |
| Location:   | On Tuckasegee River the Hogback fork of |           |     |
| Remarks:    |   |           |     |

# On-Site Searching

---

- Register
- Complete Call slips



# Obtaining Copies

---

## **Public:**

General inquiries may be directed to [archives@ncdcr.gov](mailto:archives@ncdcr.gov) or the main Search Room phone number, 919-807-7310. Email requests will receive a follow up response within 24 hours. Researchers may request copies of records through <http://req.archives.ncdcr.gov/> or visit our Search Room to view records in person. Copy costs apply.

## **Law firms, paralegals, or land surveyors:**

Contact the head of Public Services, Doug Brown at [doug.brown@ncdcr.gov](mailto:doug.brown@ncdcr.gov) or 919-807-7304. If he is unavailable, law firms can call 919-807-7350 to be routed to an available archivist. Copy costs apply.

## **Clerks and Courthouse Staff:**

Email [records@ncdcr.gov](mailto:records@ncdcr.gov) or call 919-807-7350 to be routed to an available archivist. To aid with retrieval, please use the email subject line "Courthouse Request" and provide any available indexing information, such as county, name, filing date, book and page number, and file number.

# Contact Us

---

**Email:** [archives@ncdcr.gov](mailto:archives@ncdcr.gov)

**Phone:** 919-807-7310

**Physical Address:** 109 E. Jones Street, Raleigh

## **Search Room Hours:**

Sunday & Monday: Closed

Tuesday - Friday: 8:00 a.m. - 5:30 p.m.

Saturday: 9:00 a.m. - 2:00 p.m.

**Website:** [www.archives.ncdcr.gov](http://www.archives.ncdcr.gov)

**Blog:** <https://ncarchives.wordpress.com/>